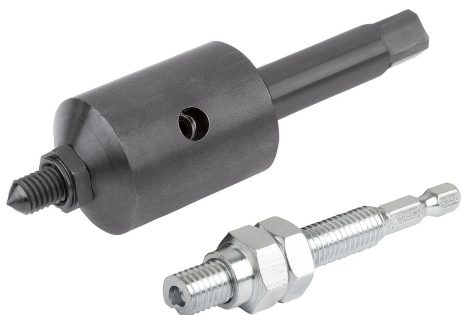


## Item description/product images



## Description

**Material:**

Steel.

**Version:**

Hand assembly tool, electro zinc-plated.

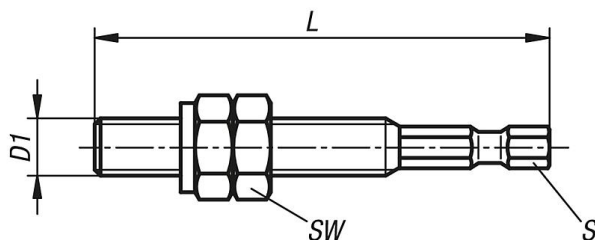
Machine assembly tool, black oxidised.

**Note:**

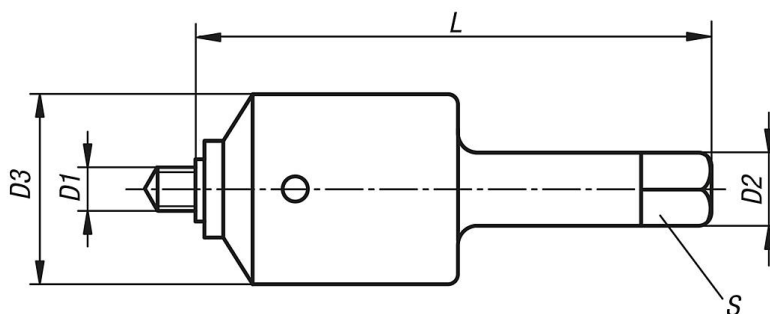
The turning in by hand is carried out with the manual assembly tool and a cordless screwdriver, ratchet, socket etc. Machine assembly is carried out with the machine assembly tool preferably on a thread-cutting machine.

## Drawings

Hand assembly tool



Machine assembly tool



## Overview of items

Order No.	Version 1	D1 internal thread	D2	D3	L length	S	SW	Insertion torque ref. values Nm	RPM ref. values for light metal
07652-803	manual operation	M3	-	-	46	1/4	5,5	2,5	-
07652-804	manual operation	M4	-	-	48	1/4	7	5,5	-
07652-805	manual operation	M5	-	-	57	1/4	8	10	-
07652-806	manual operation	M6	-	-	62	1/4	10	15	-
07652-808	manual operation	M8	-	-	72	1/4	13	28	-
07652-810	manual operation	M10	-	-	82	1/4	17	40	-
07652-812	manual operation	M12	-	-	92	1/4	19	60	-
07652-903	machine type	M3	8	18	80	6	-	2,5	650 - 900

## Overview of items

Order No.	Version 1	D1 internal thread	D2	D3	L length	S	SW	Insertion torque ref. values Nm	RPM ref. values for light metal
07652-904	machine type	M4	8	18	80	6	-	5,5	400 - 600
07652-905	machine type	M5	12,5	30	96,5	10	-	10	400 - 600
07652-906	machine type	M6	12,5	30	96,5	10	-	15	280 - 400
07652-908	machine type	M8	12,5	30	96,5	10	-	28	280 - 400
07652-910	machine type	M10	13	40	110	10	-	40	200 - 300
07652-912	machine type	M12	13	40	110	10	-	60	200 - 300
07652-916	machine type	M16	13	40	110	10	-	160	150 - 200