

Item description/product images



Description

Material:

Housing, steel.
Magnetic core hard ferrite.

Version:

Housing, electro zinc-plated.

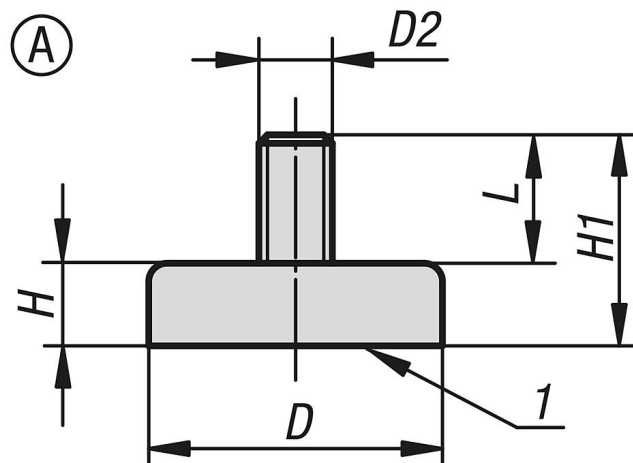
Temperature range:

max. 200°C.

Drawing reference:

1) magnetic face

Drawings



Overview of items

Order No.	Form	D	D2	L	H	H1	Magnetic force N
09065-21	A	10 ±0,15	M3	7	4,5	11,5	4
09065-22	A	13 ±0,15	M3	7	4,5	11,5	10
09065-23	A	16 ±0,15	M3	7	4,5	11,5	18
09065-24	A	20 ±0,15	M3	7	6	13	30
09065-25	A	25 ±0,15	M4	8	7	15	40
09065-26	A	32 ±0,20	M4	8	7	15	80