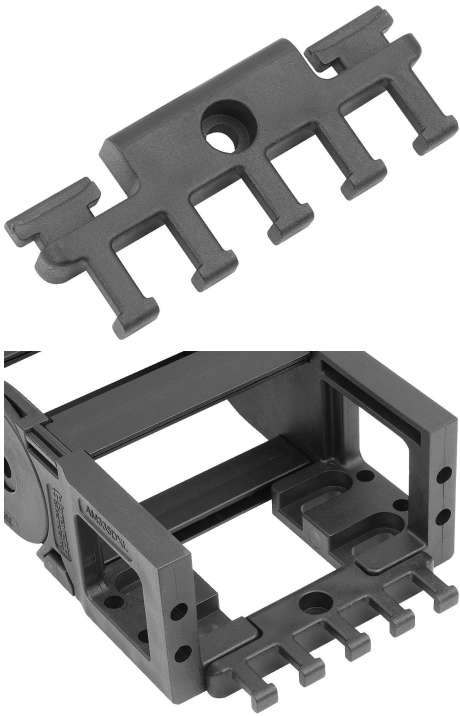


Item description/product images



Description

Material:

Polyamide fibreglass reinforced.

Version:

Black.

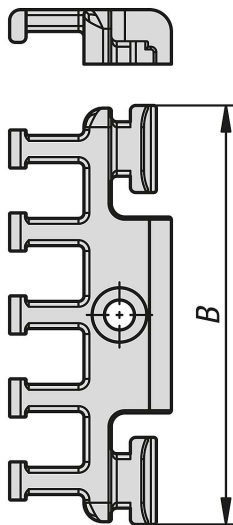
Note:

The tension relief can be clipped into the connecting element. These fixate the position of the routed cables at the chain ends.

Temperature range:

-30°C to +125°C

Drawings



Overview of items

Order No.	B	Suitable for
80850-33-35076	76	80850-30-35076...
80850-33-35103	103	80850-30-35103...
80850-33-35150	150	80850-30-35150...

