

Item description/product images



Description

Material:

Thermoplastic PPA (resistant to high temperatures), fibreglass reinforced.
Bush, stainless steel.

Version:

Black.

Note:

This pull handle is characterised by its large size and pleasant haptics.
Easy to clean due to its closed, smooth design (suitable for e.g. foodstuff production and medical technology).

Temperature range:

Continuous operating temperature acc. to IEC 216 max. 160 °C.

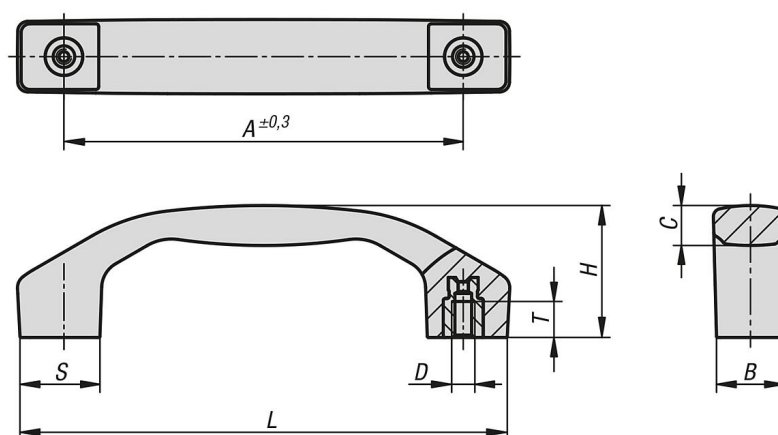
Short-term operating temperature: max. 250 °C.

Suitable for steam sterilisation (medical technology).

Assembly:

From the rear.

Drawings



Overview of items

| Order No. | Form | A | B | C | D | H | L | S | T | Load capacity N |
|------------------|------|-----|----|------|----|------|-------|----|----|-----------------|
| 06916-01-2100054 | B | 100 | 17 | 10,3 | M5 | 34 | 122,5 | 20 | 9 | 1000 |
| 06916-01-2120064 | B | 120 | 21 | 12,4 | M6 | 41 | 146 | 24 | 12 | 1000 |
| 06916-01-2140084 | B | 140 | 24 | 15,4 | M8 | 46,5 | 170 | 28 | 12 | 1000 |