

Item description/product images



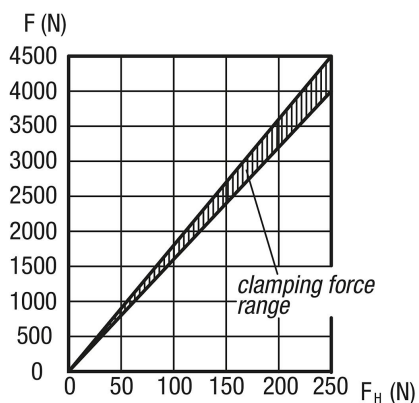
Description

Material:
Carbon steel 1.7220.
Ball grip plastic.

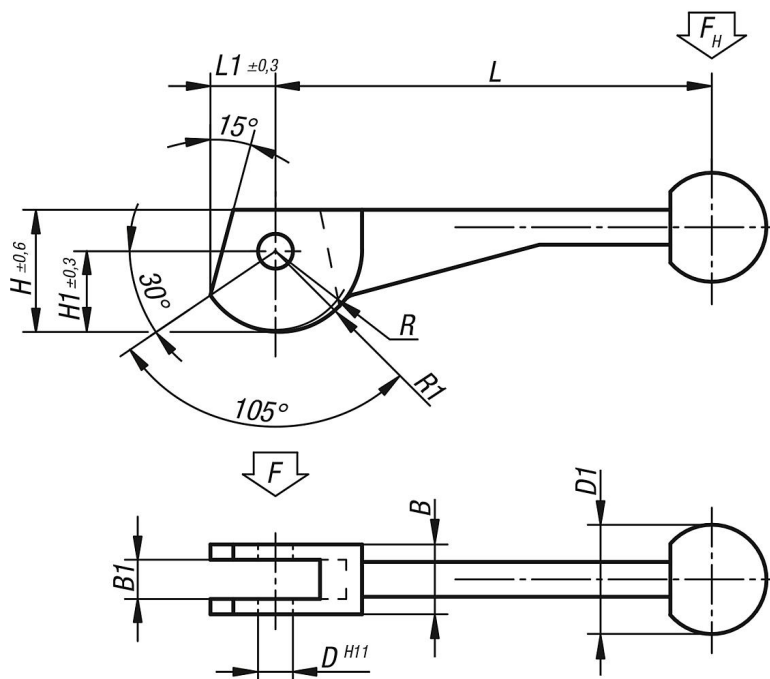
Version:
Tempered and black oxidised.

Note:
Suitable hinge pin see 04250.
The cam lever is an eccentric lever that moves along a logarithmic spiral. Its clamping properties are even over the entire contact surface of the cam.

Force diagram



Drawings



Overview of items

Order No.	L	L1	B	B1	H	H1	D	D1	R	R1
04310-08	104±2	14,9	16	9	28,2	18,7	8	25	17,2	19,2
04310-10	123±2	18,6	20	12	34,8	23,3	10	30	21,5	24

Overview of items

Order No.	L	L1	B	B1	H	H1	D	D1	R	R1
04310-12	146±3	24,3	25	14	43,8	30,3	12	30	28	31,2