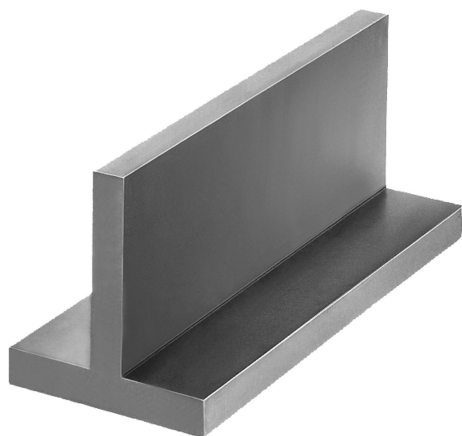


Item description/product images



**Description**

**Material:**

GJL 250 annealed or EN AW-7075.

**Note:**

The length L is cut by saw and is always supplied overlong.

**On request:**

Lengths 800 mm and 1000 mm in cast iron.

**Drawing reference:**

machined faces:  $\pm 0.25$  mm

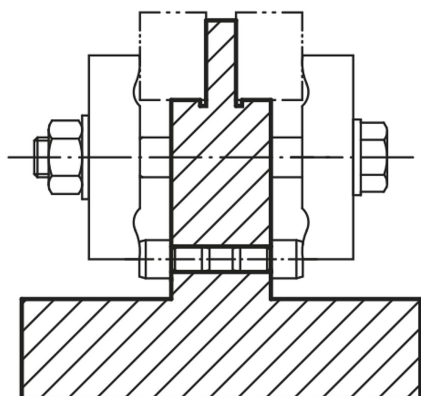
unmachined faces:  $\pm 2$  mm

length tolerance:

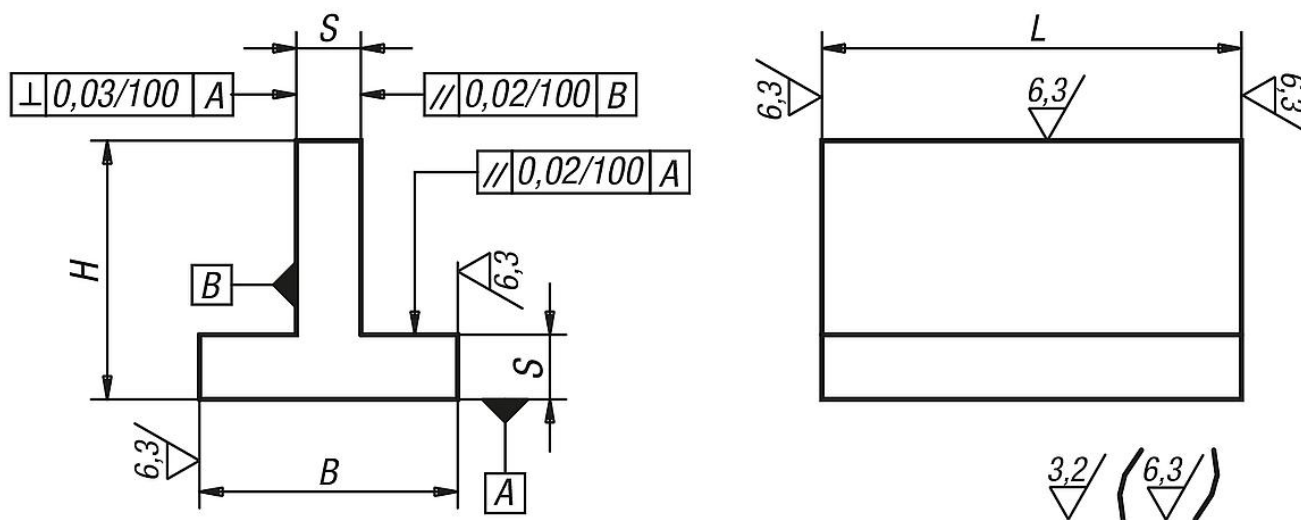
$\leq 200$  mm:  $+3/+10$

$> 200$  mm  $\leq 590$  mm:  $+8/+15$

$\geq 600$  mm:  $+20/+50$



Drawings



Overview of items

Order No. grey cast iron	Order No. aluminium	L = length	B	H	S
01580-01X	-	300	40	40	10
01580-02X	01580-202X	150/300	63	63	12
01580-03X	01580-203X	300/600/800	80	80	16
01580-04X	01580-204X	300/600/1000	100	100	20

## Overview of items

Order No. grey cast iron	Order No. aluminium	L = length	B	H	S
01580-05X	01580-205X	300/600/1000	125	125	20
01580-06X	01580-206X	300/600	160	160	25
01580-07X	01580-207X	300/600	200	200	32