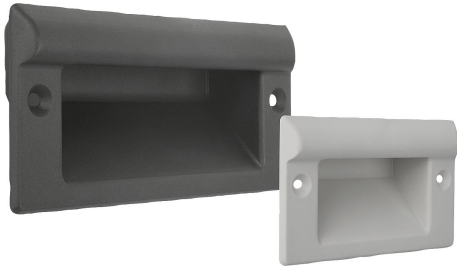


Item description/product images



## Description

**Material:**

Glass bead reinforced thermoplastic.

**Version:**

Semi-matt, black or light grey.

**Note:**

These ergonomically shaped handles are ideally suited for wall thicknesses of 1-5 mm.

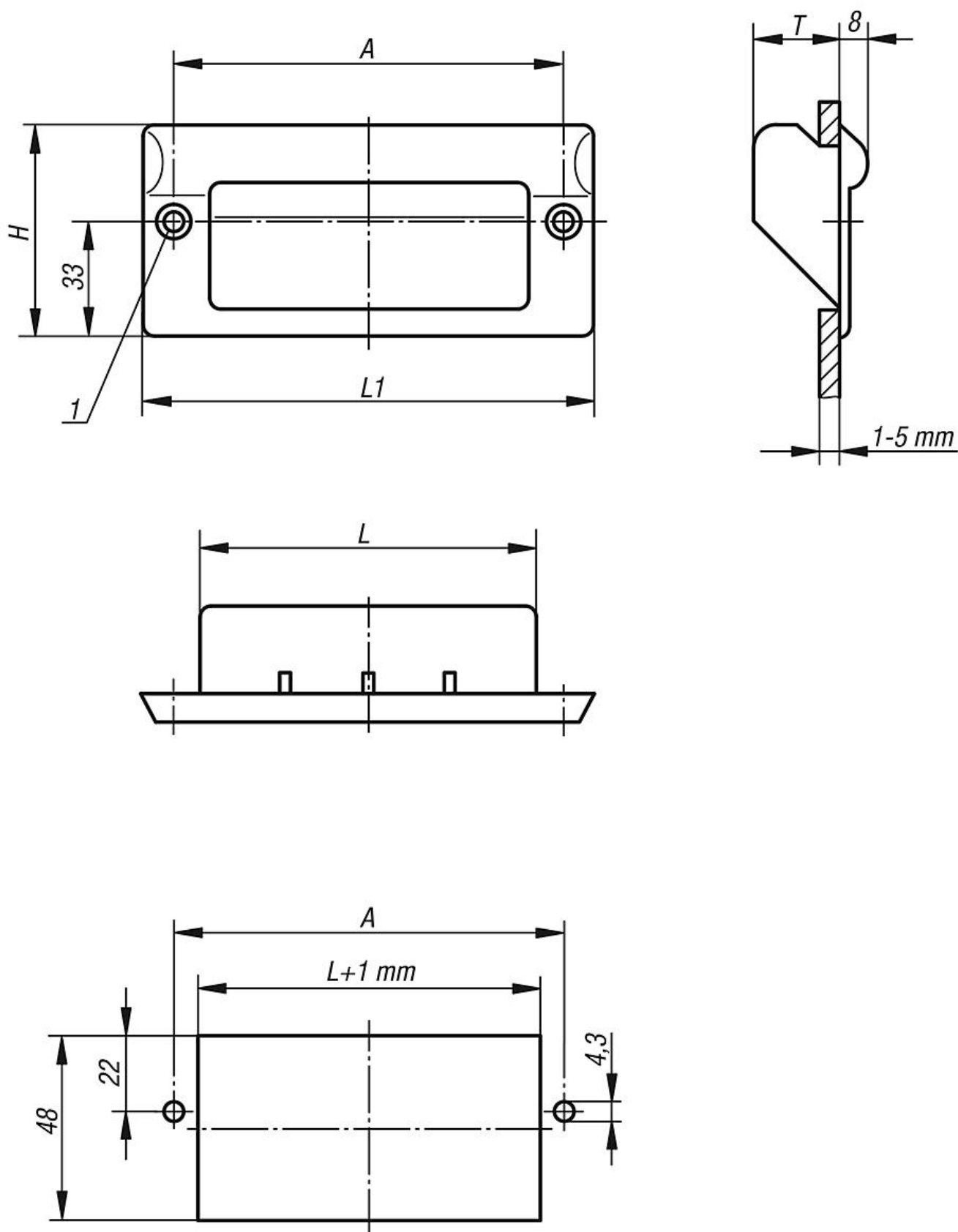
**Assembly:**

The handle is inserted in the cutout of the housing panel and then fixed from the front with 2 countersunk screws (not supplied).

**Drawing reference:**

1) for countersunk screws M4

## Drawings



## Overview of items

Order No.	Main colour	A	H	L	L1	T	Load capacity N
06965-1082041	black	82	61	67	100	25	1000
06965-1112041	black	112	61	97	130	25	1000
06965-1082042	light grey RAL 7035	82	61	67	100	25	1000
06965-1112042	light grey RAL 7035	112	61	97	130	25	1000