

Item description/product images



Description

Material, version:

Form 0 stainless steel with diamond surface comparable with abrasive grit size 100.

Note:

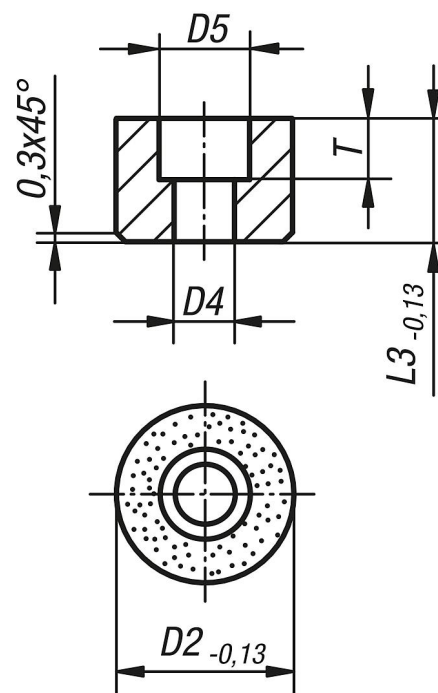
Grippers and inserts are ideal for use in clamping arms, gripping systems, clamping fixtures, clamping jaws and self-aligning pads. The use of grippers allows the transfer of very high torque values and above average grip, even with hard materials and surface irregularities.

Form 0: The abrasive diamond surface is bonded firmly to the base. It is ideally suited to supporting smooth or slippery applications with a minimum of clamping pressure. This allows the diamond particles to get a firm grip on a very small area with minimum damage to the surface.

The diamond surface offers excellent wear resistance.

Drawings

①



Overview of items

Order No.	Form	D2	D4	D5	L3	T
07113-110105	0	10	3,4	6	10	5
07113-110125	0	10	3,4	6	12	5
07113-112105	0	12	4,5	8	10	5,6
07113-112125	0	12	4,5	8	12	5,6
07113-116105	0	16	5,5	11	10	6,6
07113-116125	0	16	5,5	11	12	6,6
07113-120105	0	20	6,6	11	10	7,6
07113-120125	0	20	6,6	11	12	7,6
07113-125105	0	25	6,6	11	10	7,6

Overview of items

Order No.	Form	D2	D4	D5	L3	T
07113-125125	0	25	6,6	11	12	7,6