

## Item description/product images

**Description****Material:**

Spindle, steel 1.1213.

Nut steel 1.3505.

Wiper plastic.

**Version:**

Spindle rolled, induction hardened to  $62 \pm 2$  HRC and polished.

Nut ground, flank induction hardened to  $62 \pm 2$  HRC and polished.

**Note:**

Ball screw linear actuators with Gothic arch profile and 5 mm or 10 mm pitch.

Single-start, right-hand. Ball screw flange nut acc. to DIN 69051 Part 5 with flange.

Manufactured acc. to precision class C7 (tolerance  $\pm 50 \mu / 300$  mm). Without preloading with axial backlash P0 (max. 0.08 mm)

**On request:**

We can produce ball screw spindles to your design from a detailed drawing.

Max. production lengths 5600 mm.

Other precision classes and preloading are available (see technical information).

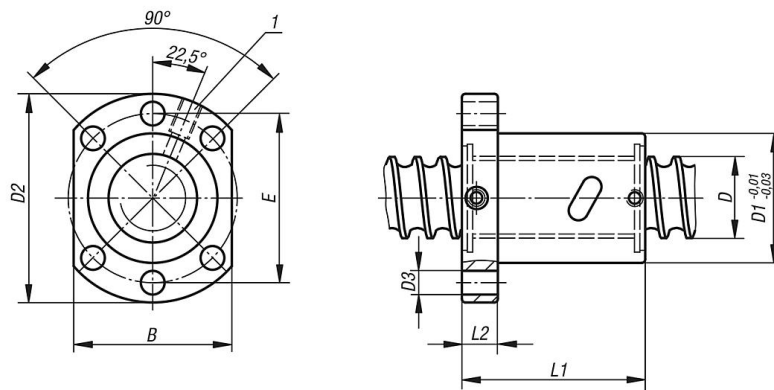
**Attention:**

The flange nut must not be removed from the spindle without a mounting aid as the balls will fall out.

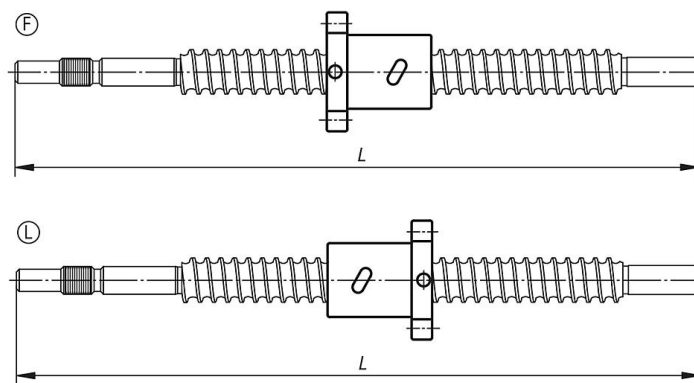
**Drawing reference:**

1) M6 lubrication hole

Drawings



Example of shaft machining:



Overview of items

Order No.	D	D1	Pitch	D2	D3	B	E	L1	L2	Ball Ø	No. of support circulations	Dynamic load rating N	Static load rating N	Stiffness K (N/µm)
24055-16052X	16	28	5	48	5,5	40	38	45	10	3,175	4	8880	15250	200
24055-20052X	20	36	5	58	6,6	44	47	51	10	3,175	4	9990	19950	250
24055-25052X	25	40	5	62	6,6	48	51	51	10	3,175	4	11190	25810	350
24055-32052X	32	50	5	80	9	62	65	52	12	3,175	4	12640	34030	400
24055-32102X	32	50	10	80	9	62	65	85	12	6,35	4	30930	61020	400