

Item description/product images

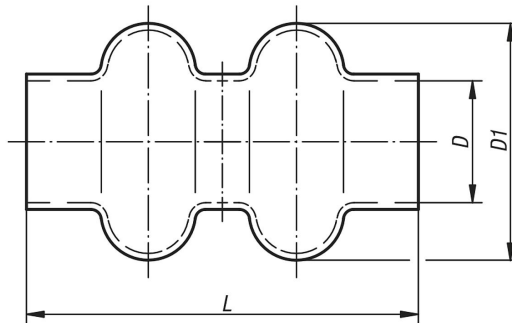


Description

Note:

These rubber sleeves fit over double joints from OD 16 mm. They are made of an elastic, oil-resistant plastic and are produced by a dipping method. By diameter D, D1 can shrink by up to 10%. The length L can vary by $\pm 5\%$.

Drawings



Overview of items

Order No.	D	D1	L	Suitable for double joints of shaft \emptyset (D1)
23415-16	16	33	55	16
23415-20	20	34	66	20
23415-24	22,5	42	81	24
23415-28	26,5	49	93	28
23415-32	30,5	59	105,5	32
23415-40	38	72	131	40
23415-50	48	88	163	50