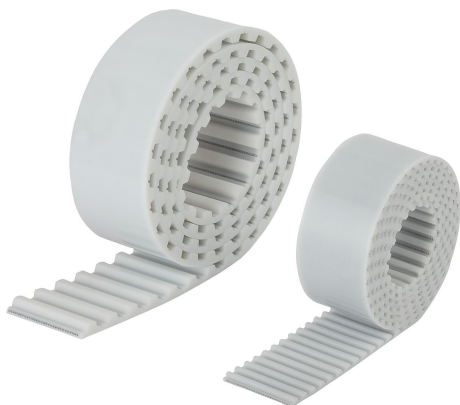


Item description/product images



Description

Material:

Polyurethane (PU) with steel cord reinforcement.

Note:

Toothed belt with trapezoidal profile to DIN 7721 T1. Intended especially for drives subject to high bending loads. May be used for pulleys with a very small diameter. Generally used for linear drives, low-power transmission and transport applications. Polyurethane belts may be welded. The power transmission rating of welded belts drops by about 50%.

Width tolerance: ± 0.5 mm

Thickness tolerance: ± 0.2 mm

On request:

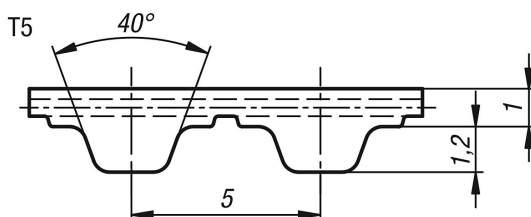
Other lengths.

With T5 pitch, in 5 mm increments.

With T10 pitch, in 10 mm increments.

Maximum belt length 100 metres.

Drawings



Overview of items

Order No.	Profile	belt width	Tension max. N	Length	matching clamp plate
22054-0510X0500	T5	10	320	500	22012-05101
22054-0510X1000	T5	10	320	1000	22012-05101
22054-0510X1500	T5	10	320	1500	22012-05101
22054-0510X2000	T5	10	320	2000	22012-05101
22054-0510X2500	T5	10	320	2500	22012-05101
22054-0510X3000	T5	10	320	3000	22012-05101
22054-0510X3500	T5	10	320	3500	22012-05101
22054-0510X4000	T5	10	320	4000	22012-05101
22054-0510X5000	T5	10	320	5000	22012-05101
22054-0516X0500	T5	16	540	500	22012-05161
22054-0516X1000	T5	16	540	1000	22012-05161
22054-0516X1500	T5	16	540	1500	22012-05161
22054-0516X2000	T5	16	540	2000	22012-05161
22054-0516X2500	T5	16	540	2500	22012-05161
22054-0516X3000	T5	16	540	3000	22012-05161
22054-0516X3500	T5	16	540	3500	22012-05161
22054-0516X4000	T5	16	540	4000	22012-05161
22054-0516X5000	T5	16	540	5000	22012-05161
22054-0525X0500	T5	25	900	500	22012-05251
22054-0525X1000	T5	25	900	1000	22012-05251
22054-0525X1500	T5	25	900	1500	22012-05251
22054-0525X2000	T5	25	900	2000	22012-05251
22054-0525X2500	T5	25	900	2500	22012-05251
22054-0525X3000	T5	25	900	3000	22012-05251
22054-0525X3500	T5	25	900	3500	22012-05251

Overview of items

Order No.	Profile	belt width	Tension max. N	Length	matching clamp plate
22054-0525X4000	T5	25	900	4000	22012-05251
22054-0525X5000	T5	25	900	5000	22012-05251