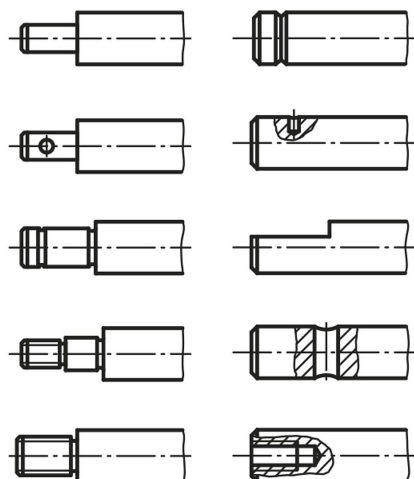


## Item description/product images



## Description

## Material:

Steel 1.1213.  
Stainless steel 1.4034.  
Stainless steel 1.4112.

## Version:

Steel, ground.  
Steel, ground and hard-chromed, chrome coating 5 - 10 µm.  
Stainless steel, ground.

The precision steel shafts are generally inductively surface hardened.

## Note:

The surface value obtained during the inductive hardening process guarantees high surface wear resistance.

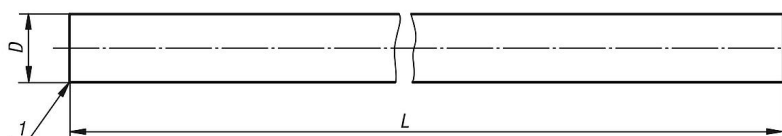
## On request:

Processing of the ends and cylindrical lateral areas according to customer design.  
Lengths up to a max. 4000 mm.

## Drawing reference:

1) chamfered

## Drawings



## Overview of items

Order No.	Material	Surface finish body	Steel code	D	L	Hardening depth max.	Surface hardness HRC
21595-003X0330	steel	hardened and ground	1.1213	3h6	330	hardened	62 ±2
21595-004X1000	steel	hardened and ground	1.1213	4h6	1000	hardened	62 ±2
21595-005X1000	steel	hardened and ground	1.1213	5h6	1000	0,8	62 ±2
21595-006X1000	steel	hardened and ground	1.1213	6h6	1000	0,8	62 ±2
21595-008X1000	steel	hardened and ground	1.1213	8h6	1000	1	62 ±2
21595-010X1000	steel	hardened and ground	1.1213	10h6	1000	1	62 ±2
21595-012X1000	steel	hardened and ground	1.1213	12h6	1000	1,3	62 ±2
21595-016X1000	steel	hardened and ground	1.1213	16h6	1000	1,6	62 ±2
21595-020X1000	steel	hardened and ground	1.1213	20h6	1000	1,6	62 ±2
21595-025X1000	steel	hardened and ground	1.1213	25h6	1000	1,8	62 ±2
21595-030X1000	steel	hardened and ground	1.1213	30h6	1000	2	62 ±2
21595-040X1000	steel	hardened and ground	1.1213	40h6	1000	2	62 ±2
21595-050X1000	steel	hardened and ground	1.1213	50h6	1000	2,6	62 ±2
21595-105X1000	steel	hardened, ground and hard chrome-plated	1.1213	5h7	1000	0,8	65 - 70
21595-106X1000	steel	hardened, ground and hard chrome-plated	1.1213	6h7	1000	0,8	65 - 70
21595-108X1000	steel	hardened, ground and hard chrome-plated	1.1213	8h7	1000	1	65 - 70
21595-110X1000	steel	hardened, ground and hard chrome-plated	1.1213	10h7	1000	1	65 - 70
21595-112X1000	steel	hardened, ground and hard chrome-plated	1.1213	12h7	1000	1,3	65 - 70
21595-116X1000	steel	hardened, ground and hard chrome-plated	1.1213	16h7	1000	1,6	65 - 70
21595-120X1000	steel	hardened, ground and hard chrome-plated	1.1213	20h7	1000	1,6	65 - 70
21595-125X1000	steel	hardened, ground and hard chrome-plated	1.1213	25h7	1000	1,8	65 - 70
21595-130X1000	steel	hardened, ground and hard chrome-plated	1.1213	30h7	1000	2	65 - 70

## Overview of items

Order No.	Material	Surface finish body	Steel code	D	L	Hardening depth max.	Surface hardness HRC
21595-140X1000	steel	hardened, ground and hard chrome-plated	1.1213	40h7	1000	2	65 - 70
21595-150X1000	steel	hardened, ground and hard chrome-plated	1.1213	50h7	1000	2,6	65 - 70
21595-206X1000	stainless steel	hardened and ground	1.4034	6h6	1000	0,8	51 - 55
21595-208X1000	stainless steel	hardened and ground	1.4034	8h6	1000	1	51 - 55
21595-210X1000	stainless steel	hardened and ground	1.4034	10h6	1000	1	51 - 55
21595-212X1000	stainless steel	hardened and ground	1.4034	12h6	1000	1,3	51 - 55
21595-216X1000	stainless steel	hardened and ground	1.4034	16h6	1000	1,6	51 - 55
21595-220X1000	stainless steel	hardened and ground	1.4034	20h6	1000	1,8	51 - 55
21595-225X1000	stainless steel	hardened and ground	1.4034	25h6	1000	2	51 - 55
21595-230X1000	stainless steel	hardened and ground	1.4034	30h6	1000	2,4	51 - 55
21595-240X1000	stainless steel	hardened and ground	1.4034	40h6	1000	2	51 - 55
21595-250X1000	stainless steel	hardened and ground	1.4034	50h6	1000	2,6	51 - 55
21595-303X0300	stainless steel	hardened and ground	1.4112	3h6	300	hardened	52-56
21595-304X1000	stainless steel	hardened and ground	1.4112	4h6	1000	hardened	52-56
21595-305X1000	stainless steel	hardened and ground	1.4112	5h6	1000	0,8	52-56
21595-306X1000	stainless steel	hardened and ground	1.4112	6h6	1000	0,8	52-56
21595-308X1000	stainless steel	hardened and ground	1.4112	8h6	1000	1	52-56
21595-310X1000	stainless steel	hardened and ground	1.4112	10h6	1000	1	52-56
21595-312X1000	stainless steel	hardened and ground	1.4112	12h6	1000	1	52-56
21595-316X1000	stainless steel	hardened and ground	1.4112	16h6	1000	1,5	52-56
21595-320X1000	stainless steel	hardened and ground	1.4112	20h6	1000	1,5	52-56
21595-325X1000	stainless steel	hardened and ground	1.4112	25h6	1000	1,7	52-56
21595-330X1000	stainless steel	hardened and ground	1.4112	30h6	1000	1,7	52-56
21595-340X1000	stainless steel	hardened and ground	1.4112	40h6	1000	2	52-56
21595-350X1000	stainless steel	hardened and ground	1.4112	50h6	1000	2,6	52-56