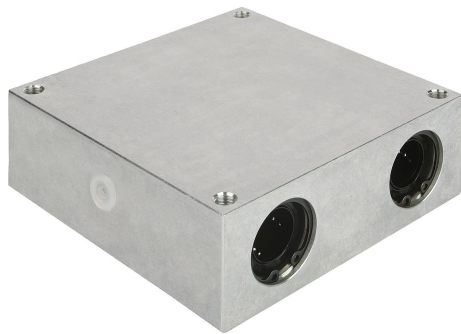


Item description/product images

**Description****Material:**

Housing aluminium

Version:

Housing bright.

Note:

Ready to install linear housing units consisting of an extruded aluminium housing with four self-aligning linear ball bearings 21510 and seals both sides. The bearings are secured in the housing with DIN 472 circlips.

Recommended shaft tolerance: h6.

Load ratings according to the linear ball bearing specifications (x4).

On request:

Linear housing units can be equipped with any of our linear ball bearings.

Accessory:

End seals 21560.

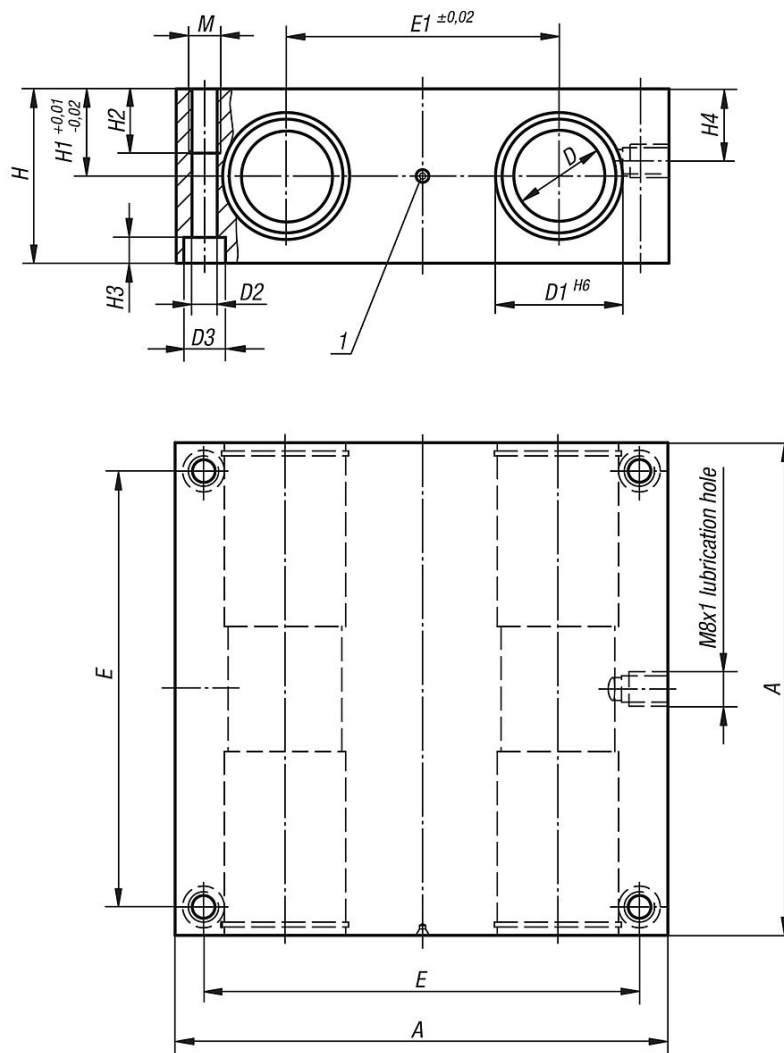
Precision guide shafts 21595.

Fastening screws 07160 or 07161.

Drawing reference:

1) centring hole

Drawings



Overview of items

Order No.	A	D	D1	D2	D3	E	E1	H	H1	H2	H3	H4	M
21550-121002	85	12	22	5,3	10	73	42	32	16	13	5,4	13	M6
21550-161002	100	16	26	5,3	10	88	54	36	18	13	5,4	15	M6
21550-201002	130	20	32	6,8	11	115	72	46	23	18	6,4	19	M8
21550-251002	160	25	40	9	15	140	88	56	28	22	8,6	24	M10
21550-301002	180	30	47	10,5	18	158	96	64	32	26	10,6	27	M12
21550-401002	230	40	62	13,5	20	202	122	80	40	34	12,6	35	M16
21550-501002	280	50	75	13,5	20	250	152	96	48	34	12,6	40	M16