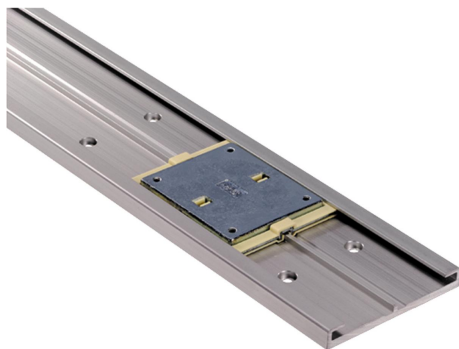


## Item description/product images



## Description

**Material:**

Carriage body zink.

Plastic bearing material iglidur® J.

Rail anodised aluminium.

**Version:**

Body chromed.

Guide rail natural colour anodised.

**Note:**

Flat slide guides are maintenance-free and corrosion resistant. Very high speeds and accelerations are possible due to the low weight. Applicable temperature max. 80 °C.

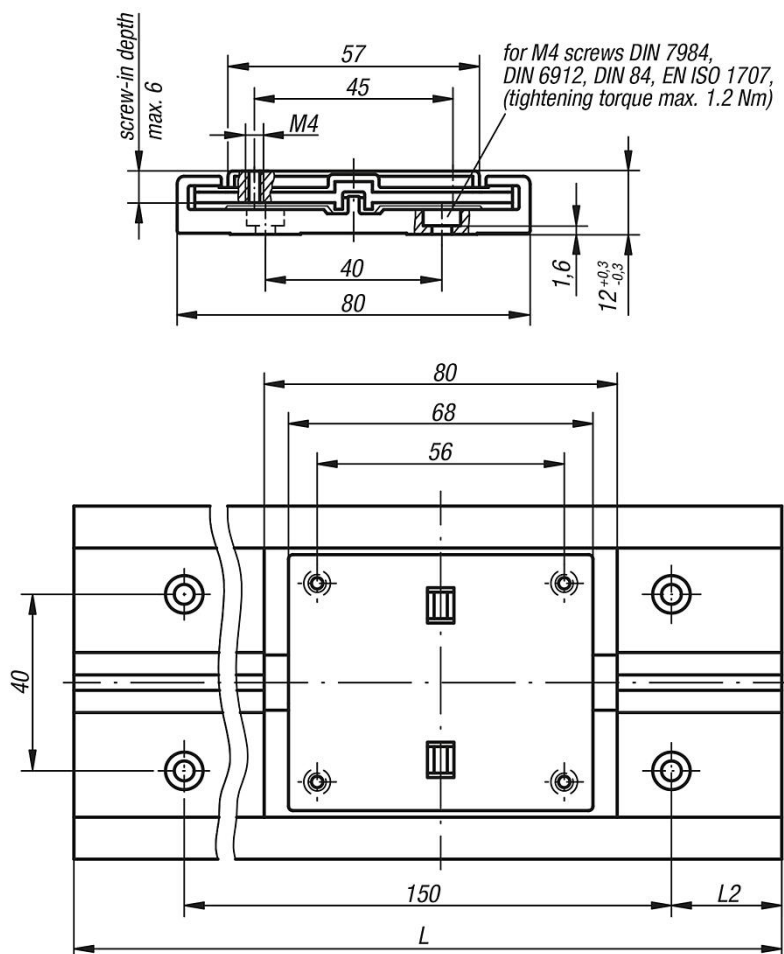
Miniature slide guides are insensitive to dust and are ideal for dry running.

\*\* length L2 = 30 mm and

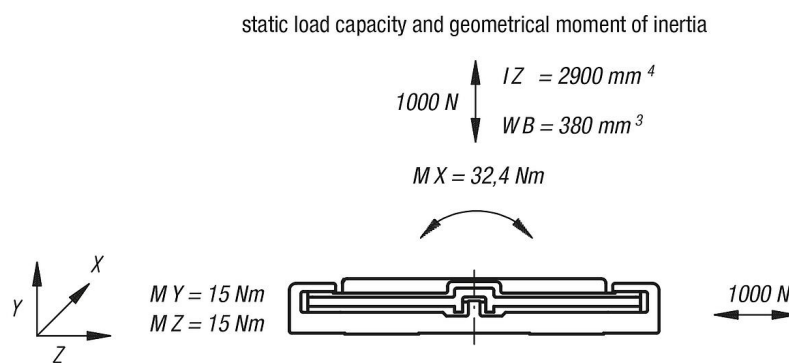
\* L = 1000 mm included

L2 and L only available in full mm.

## Drawings



## Drawings



## Overview of items

## Carriage

Order No.	Item	Version 1
21230-8000	Guide Carriage	fixed bearing
21230-8010	Guide Carriage	floating bearing

## Guide rails

Order No.	Item	L max.	L2
21230-8030X3960	Guide rail	3960	30

Order No.	Item	Version 1	L max.	L	L2	L2 min.	L2 max.
21230-80**X*	Guide rail	L2 and L customer specific	3960	*	**	25	100