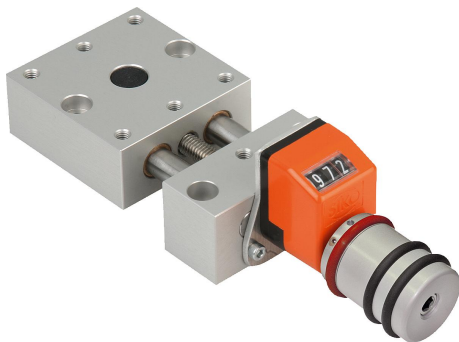


## Item description/product images



## Description

**Material:**

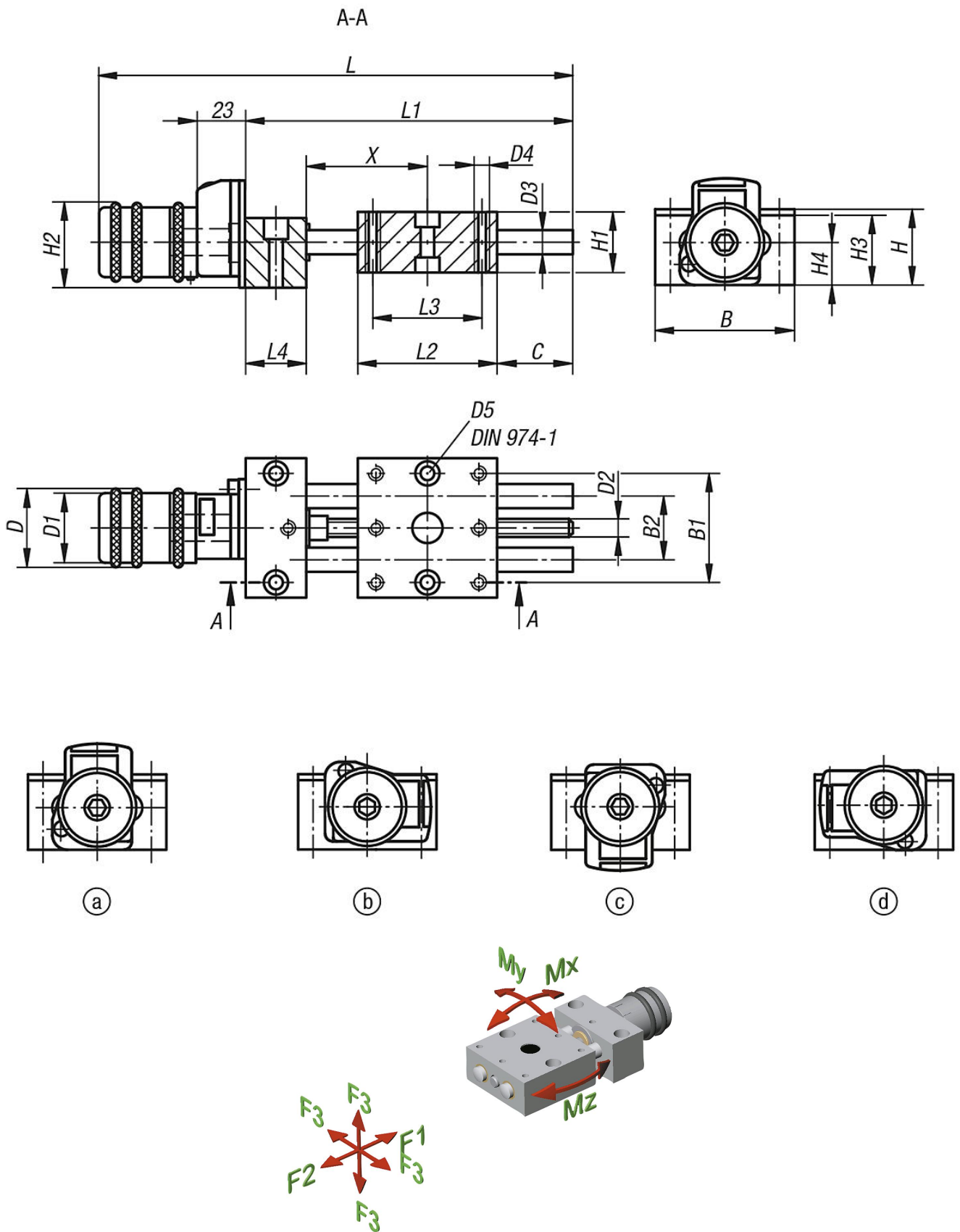
Bearing block and carriage aluminium alloy, anodised.  
Guide columns stainless steel, ground.  
Spindle stainless steel, rolled thread.  
Guide bearing maintenance-free.  
Position indicator plastic.

**Version:**

Radial play on guide < 0.02 mm.  
No axial backlash.  
Spindle self-locking, with additional lock.

**Note:**

Due to the practically play-free guides and absolutely play-free spindle, loosening or clamping of the spindle is not required during adjustments.  
Digital position indicators with 0.1 mm display accuracy, digits increase with right rotation. The display value of the position indicator can be adjusted by turning the carrier ring. The mounted position of the position indicator can be set in 4 positions with a screw.  
Within the respective sizes, the positioning stages can be easily combined using the modular principle.



Overview of items

Order No.	B	B1	B2	D	D1	D2	D3	D4	D5	H	H1	H2	H3	H4	L	L1	L2	L3	L4	Travel S	F1 N	F2 N	F3 N	Mx Nm	My Nm	Mz Nm
21102-08	46	36	21	26	23	M6x1	8	M4	4	24	20	27	23	14	135	80	46	36	20	14	200	200	X = 39 (50)	1,9	0,9	1,9
21102-12	75	60	38	26	23	M6x1	12	M6	6	28	25	29	27	15,5	187,5	133	75	60	30	25	300	300	X = 58 (100)	5,5	3	5,5