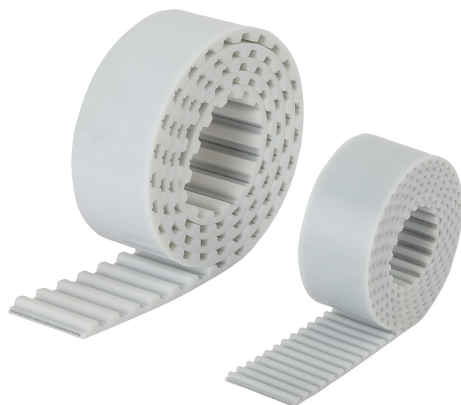


## Item description/product images



## Description

**Material:**

Polyurethane (PU) with steel cord reinforcement.

**Note:**

Toothed belt with trapezoidal profile to DIN 7721 T1. Intended especially for drives subject to high bending loads. May be used for pulleys with a very small diameter. Generally used for linear drives, low-power transmission and transport applications. Polyurethane belts may be welded. The power transmission rating of welded belts drops by about 50%.

Width tolerance:  $\pm 0.5$  mm

Thickness tolerance:  $\pm 0.2$  mm

**On request:**

Other lengths.

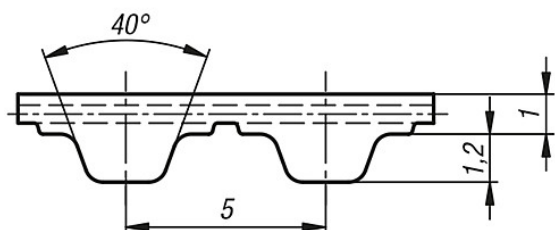
With T5 pitch, in 5 mm increments.

With T10 pitch, in 10 mm increments.

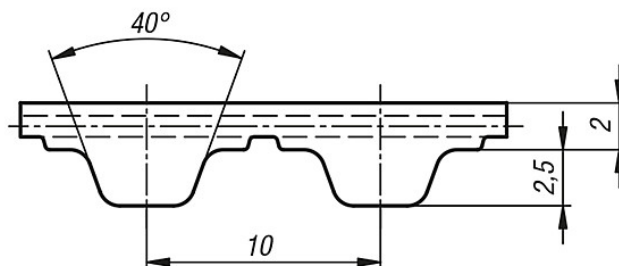
Maximum belt length 100 metres.

## Drawings

Profile T5



Profile T10



## Overview of items

| Order No.   | Profile | Belt width | Tension max. N | Length                                      | matching clamp plate |
|-------------|---------|------------|----------------|---|----------------------|
| 22054-0510X | T5      | 10         | 320            | 500/1000/1500/2000/2500/3000/3500/4000/5000 | 22012-05101          |
| 22054-0516X | T5      | 16         | 540            | 500/1000/1500/2000/2500/3000/3500/4000/5000 | 22012-05161          |
| 22054-0525X | T5      | 25         | 900            | 500/1000/1500/2000/2500/3000/3500/4000/5000 | 22012-05251          |
| 22054-1016X | T10     | 16         | 1610           | 500/1000/1500/2000/2500/3000/3500/4000/5000 | 22012-10161          |
| 22054-1025X | T10     | 25         | 2650           | 500/1000/1500/2000/2500/3000/3500/4000/5000 | 22012-10251          |
| 22054-1032X | T10     | 32         | 3450           | 500/1000/1500/2000/2500/3000/3500/4000/5000 | 22012-10321          |