

## Item description/product images



## Description

**Material:**

Plates, thermoplastic, fibreglass reinforced.  
Anti-slip plate thermoplastic elastomer.

**Version:**

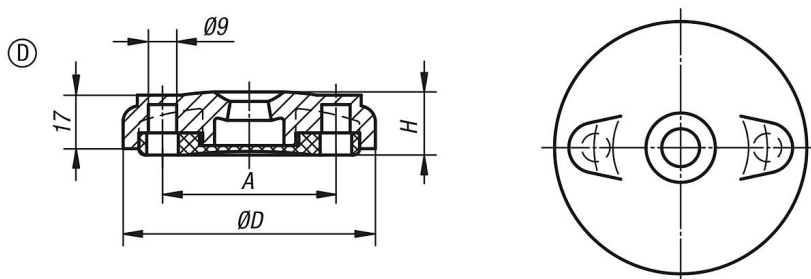
Black.

**Note:**

Levelling feet consist of a plate and a threaded spindle. Any plate can be combined with any threaded spindle.

The anti-slip plate absorbs vibrations and prevents the levelling foot slipping.  
For matching threaded spindles see 27828.

## Drawings



## Overview of items

Order No.	Form	D	A	H	Load rating max. kN
27815-4080	D	80	55	20	12
27815-4100	D	100	74	20	12