

## Item description/product images



## Description

**Material:**

Die-cast zinc plates

**Version:**

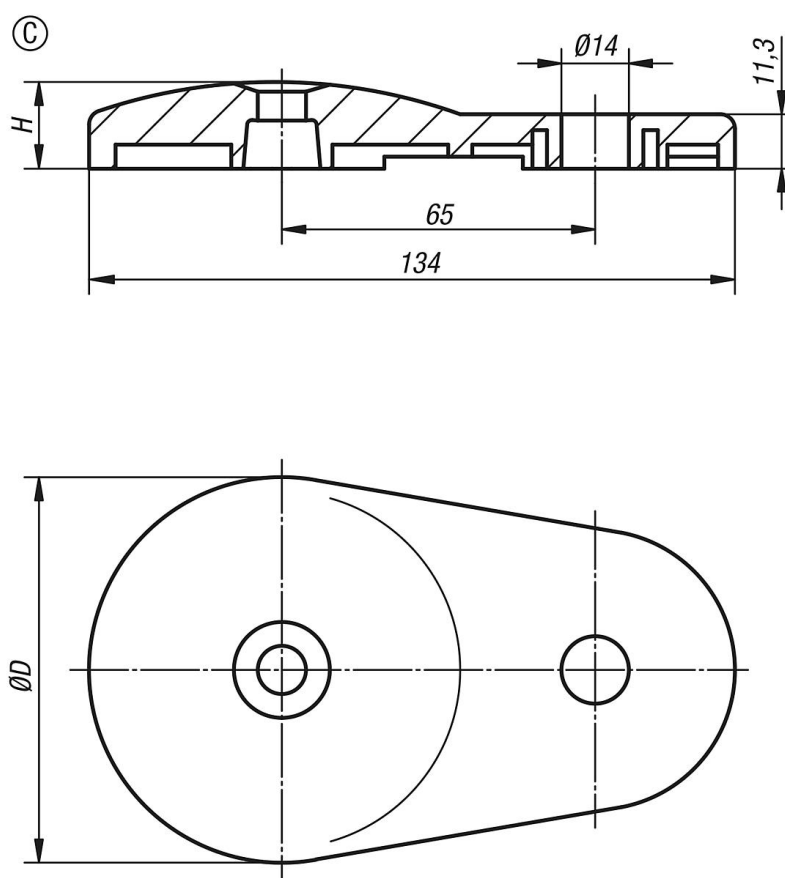
Plate black powder-coated.

**Note:**

Levelling feet consist of a plate and a threaded spindle. Any plate can be combined with any threaded spindle.

For matching threaded spindles, see 27828.

## Drawings



## Overview of items

Order No.	Form	H	Load rating max. kN
27818-30801	C	18	35