

## Item description/product images



## Description

**Material:**

Housing steel plate.  
Wheels PA 6.

**Version:**

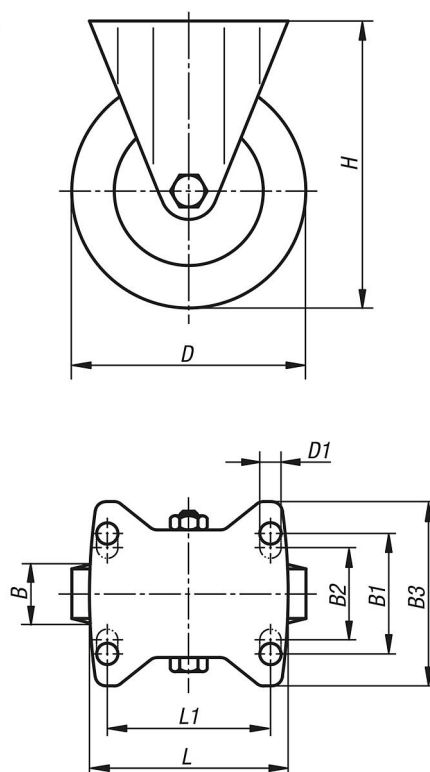
Pressed housing; wheels with slide bearing

**Note:**

The PA 6 wheels have a low rolling resistance, are non-corroding, resist abrasion and are particularly shock and impact proof.

## Drawings

fixed castor



## Overview of items

Order No.	Item	Version 1	Wheel bearing	B	B1	B2	B3	D	D1	H	L	L1	Permissible load kg
95034-075321	Fixed castor	without locking system	plain bearing	32	60	-	85	75	9	98	100	80	200
95034-100371	Fixed castor	without locking system	plain bearing	37	60	-	85	100	9	125	100	80	200
95034-125401	Fixed castor	without locking system	plain bearing	40	60	-	85	125	9	150	100	80	200
95034-150501	Fixed castor	without locking system	plain bearing	50	80	75	110	150	11	190	140	105	400

