

Item description/product images



Description

Material:

Housing steel plate.

Wheel body die-cast aluminium with Extrathane® tread.

Version:

Housing press formed.

Double ball bearing with ball shield in the castor head.

Precision ball bearings in the wheels.

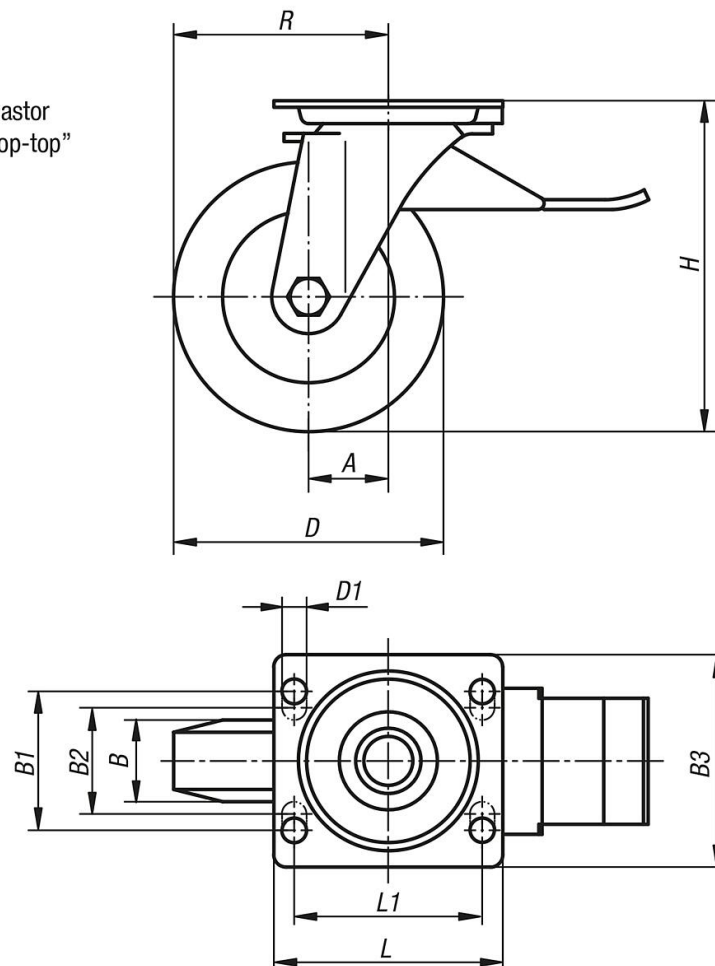
Note:

The wheels are corrosion resistant and they have a low rolling resistance. Wheel axle bolted.

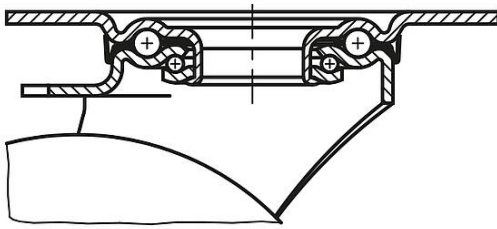
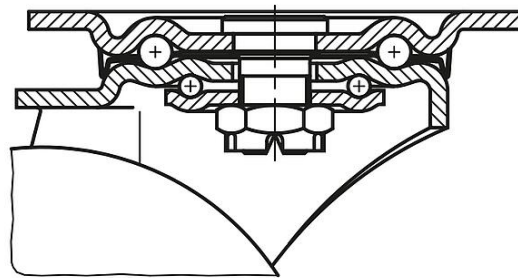
From diameter 125 mm the wheels have spokes.

Drawings

swivel castor
with "stop-top"



Drawings

swivel head bearing $R1 \leq 125$ swivel head bearing $R1 \geq 160$ 

Overview of items

| Order No. | Item | Version 1 | Wheel bearing | A | B | B1 | B2 | B3 | D | D1 | H | L | L1 | R | Permissible load kg |
|--------------|---------------|------------------------------|---------------|----|----|----|----|-----|-----|----|-----|-----|-----|-------|---------------------|
| 95028-100402 | Swivel castor | with stop-top locking system | ball bearing | 45 | 40 | 60 | - | 85 | 100 | 9 | 130 | 100 | 80 | 95 | 250 |
| 95028-125402 | Swivel castor | with stop-top locking system | ball bearing | 48 | 40 | 60 | - | 85 | 125 | 9 | 155 | 100 | 80 | 110,5 | 250 |
| 95028-160502 | Swivel castor | with stop-top locking system | ball bearing | 63 | 50 | 80 | 75 | 110 | 160 | 11 | 202 | 140 | 105 | 143 | 550 |
| 95028-200502 | Swivel castor | with stop-top locking system | ball bearing | 70 | 50 | 80 | 75 | 110 | 200 | 11 | 245 | 140 | 105 | 170 | 800 |