

## Item description/product images



## Description

**Material:**

Housing steel plate.

Wheel body die-cast aluminium with Extrathane® tread.

**Version:**

Pressed housing; wheels with precision ball bearing

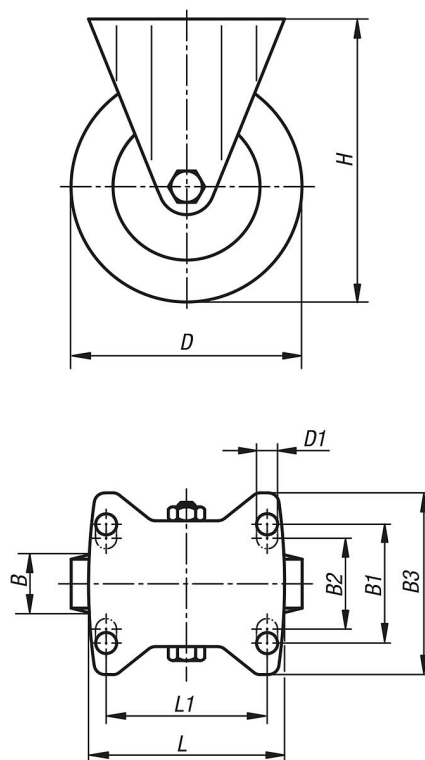
**Note:**

The wheels are corrosion resistant and they have a low rolling resistance. Wheel axle bolted.

From diameter 125 mm the wheels have spokes.

## Drawings

fixed castor



## Overview of items

Order No.	Item	Version 1	Wheel bearing	B	B1	B2	B3	D	D1	H	L	L1	Permissible load kg
95028-100401	Fixed castor	without locking system	ball bearing	40	60	-	85	100	9	130	100	80	250
95028-125401	Fixed castor	without locking system	ball bearing	40	60	-	85	125	9	155	100	80	250
95028-160501	Fixed castor	without locking system	ball bearing	50	80	75	110	160	11	202	140	105	550
95028-200501	Fixed castor	without locking system	ball bearing	50	80	75	110	200	11	245	140	105	800

