

Item description/product images



Description

Material:

Housing steel plate.

Wheel body die-cast aluminium with Extrathane® tread.

Version:

Housing press formed.

Double ball bearing with ball shield in the castor head.

Precision ball bearings in the wheels.

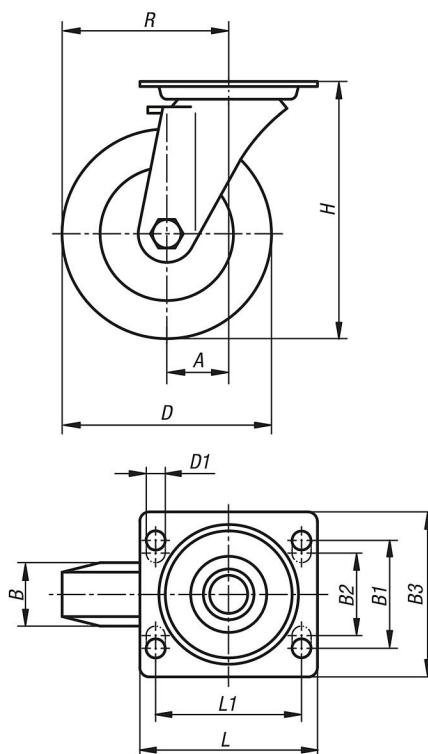
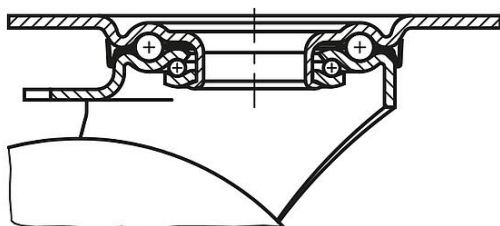
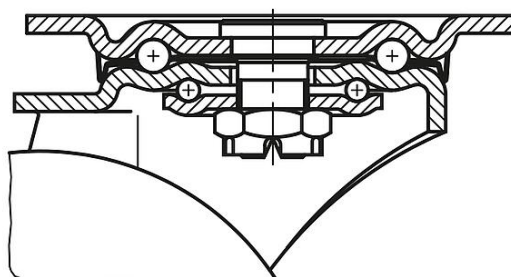
Note:

The wheels are corrosion resistant and they have a low rolling resistance. Wheel axle bolted.

From diameter 125 mm the wheels have spokes.

Drawings

swivel castor

swivel head bearing $R1 \leq 125$ swivel head bearing $R1 \geq 160$ 

Overview of items

Order No.	Item	Version 1	Wheel bearing	A	B	B1	B2	B3	D	D1	H	L	L1	R	Permissible load kg
95028-10040	Swivel castor	without locking system	ball bearing	45	40	60	-	85	100	9	130	100	80	95	250
95028-12540	Swivel castor	without locking system	ball bearing	48	40	60	-	85	125	9	155	100	80	110,5	250
95028-16050	Swivel castor	without locking system	ball bearing	63	50	80	75	110	160	11	202	140	105	143	550
95028-20050	Swivel castor	without locking system	ball bearing	70	50	80	75	110	200	11	245	140	105	170	800