

Item description/product images



Description

Material:

Housing thick steel plate.
Tyres steel-wire reinforced elastic solid rubber.
Wheel body welded steel.

Version:

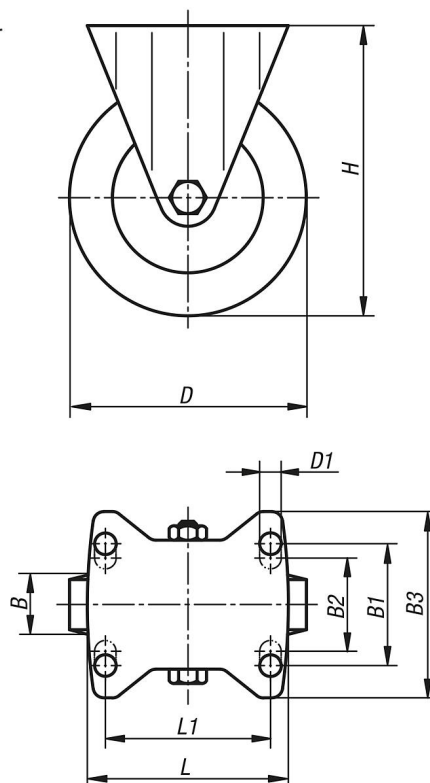
Pressed housing; reinforced fork, top plate and swivel head bolt; wheels with precision ball bearing

Note:

These castors are particularly impact and shock proof and assure a high service life. Wheel axle bolted.

Drawings

fixed castor



Overview of items

Order No.	Item	Version 1	Wheel bearing	B	B1	B2	B3	D	D1	H	L	L1	Permissible load kg
95020-100401	Fixed castor	without locking system	ball bearing	40	60	-	85	100	9	140	100	80	180
95020-125501	Fixed castor	without locking system	ball bearing	50	80	75	110	125	11	170	140	105	280
95020-160501	Fixed castor	without locking system	ball bearing	50	80	75	110	160	11	202	140	105	400
95020-200501	Fixed castor	without locking system	ball bearing	50	80	75	110	200	11	245	140	105	500
95020-250601	Fixed castor	without locking system	ball bearing	60	80	75	110	250	11	295	140	105	700

