

Item description/product images



Description

Material:

Housing steel plate.
Wheel treads solid rubber.
Wheel rims polyamide.

Version:

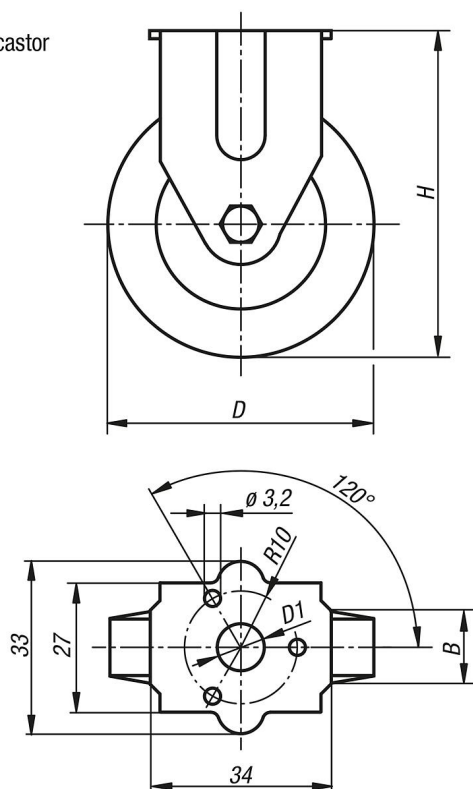
Pressed housing; wheels with slide bearing

Note:

Wheel axle bolted.
Swivel and fixed castors with bolt hole.
Wheels grey, non-marking.

Drawings

fixed castor



Overview of items

Order No.	Item	Version 1	Wheel bearing	B	D	D1	H	Permissible load kg
95010-050181	Fixed castor	without locking system	plain bearing	18	50	11	69	40
95010-075251	Fixed castor	without locking system	plain bearing	25	75	11	98	60

