

Item description/product images



**Description**

**Material:**

Housing thick steel plate.  
Wheels high-quality PA 6.

**Version:**

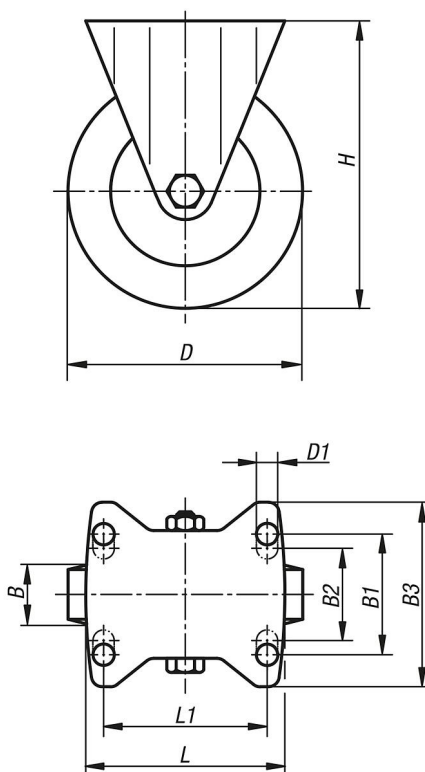
Pressed housing

**Note:**

The hardened bearing shells make these castors particularly shock and impact proof. The wheels have high abrasion resistance. Wheel axle bolted.

Drawings

fixed castor



Overview of items

Order No.	Item	Version 1	Wheel bearing	B	B1	B2	B3	D	D1	L	L1	H	Permissible load kg
95040-075321	Fixed castor	without locking system	plain bearing	32	60	-	85	75	9	100	80	118	300
95040-075324	Fixed castor	without locking system	ball bearing	32	60	-	85	75	9	100	80	118	300
95040-100371	Fixed castor	without locking system	plain bearing	37	60	-	85	100	9	100	80	140	500
95040-100374	Fixed castor	without locking system	ball bearing	37	60	-	85	100	9	100	80	140	500
95040-125401	Fixed castor	without locking system	plain bearing	40	60	-	85	125	9	100	80	165	700
95040-125404	Fixed castor	without locking system	ball bearing	40	60	-	85	125	9	100	80	165	700
95040-150501	Fixed castor	without locking system	plain bearing	50	80	75	110	150	11	140	105	197	800
95040-150504	Fixed castor	without locking system	ball bearing	50	80	75	110	150	11	140	105	197	800

