

Item description/product images

**Description****Material:**

Steel.

Version:

Electro zinc-plated (sizes 5 and 6 painted).

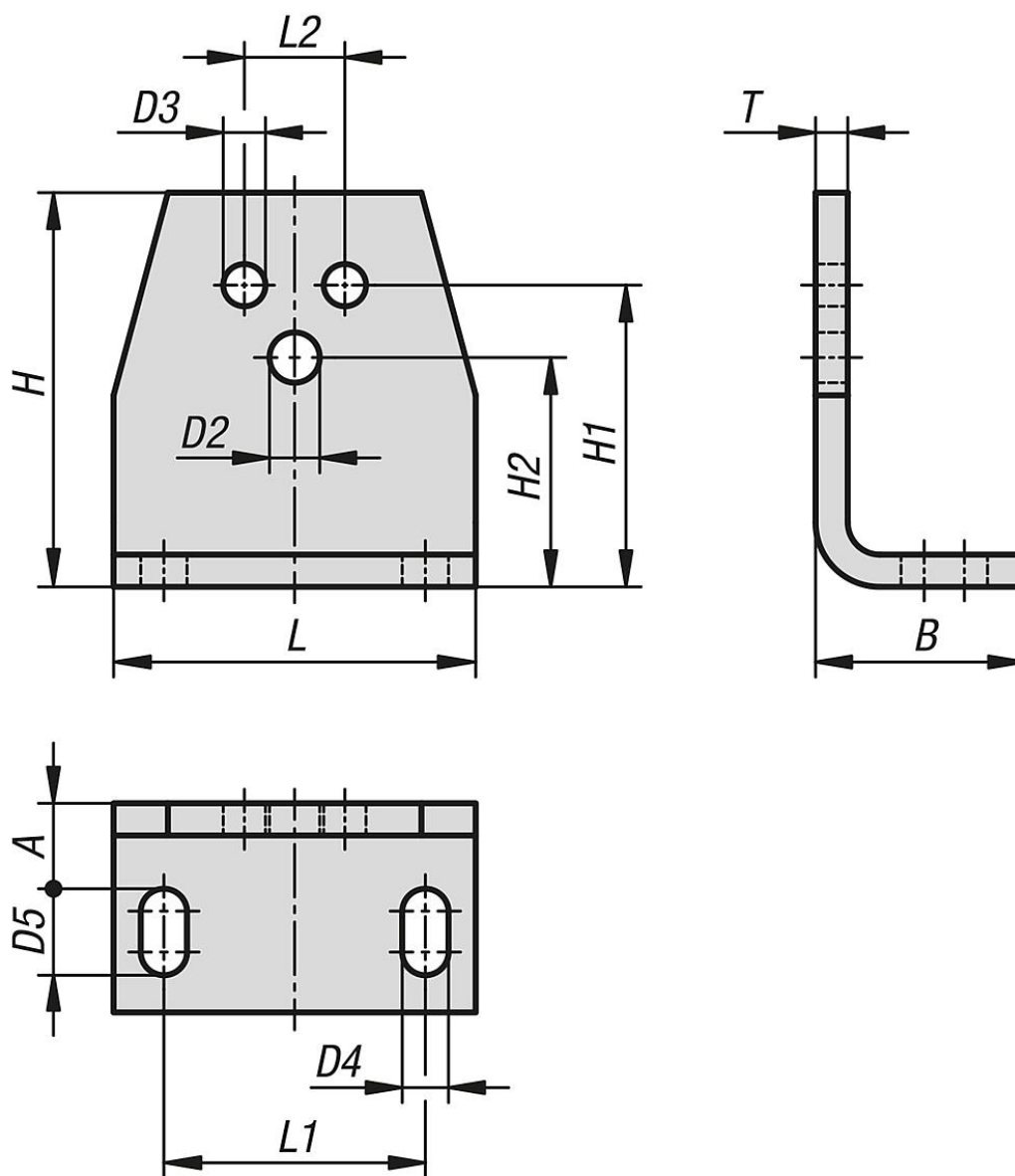
Note:

The angle bracket enables easy mounting of the clamping elements directly on the machine component. The bore D2 serves to hold the clamping element. The clamping element can be mounted on the front or rear of the bracket.

The bores D3 enable the bracket to be used for other applications.



Drawings



Overview of items

Order No.	Size	A	B	D2	D3	D4	D5	H	H1	H2	L	L1	L2	T	Suitable for clamping element size
22281-20-1	1	12	30	6,5	5,5	7	13	46	35	27	50	30	10	4	1
22281-20-2	2	14	32	8,5	6,5	7	13	58	44	34	60	40	12	6	2
22281-20-3	3	16	38	10,5	8,5	9,5	16	75	55	45	70	50	20	6	3
22281-20-4	4	21	52	12,5	10,5	11,5	22	98	75	57	90	65	25	8	4
22281-20-5	5	21	55	16,5	12,5	14	24	116	85	66	110	80	35	8	5
22281-20-6	6	26	66	20,5	12,5	18	30	140	110	80	140	100	40	10	6

