

Item description/product images



Description

Version:

Single-stage.

Note:

Planetary gearing for stepper motors of the NEMA 23 and NEMA 34 size. Suitable for all mounting positions. Maintenance-free thanks to lifetime lubrication. The planetary gearing is self-centring, equipped with a flange adapter system and axial length compensation.

Technical data:

Gear stages: 1

Nominal input speed: 3000 rpm

Max. input speed: 6000 rpm

Rating: IP64

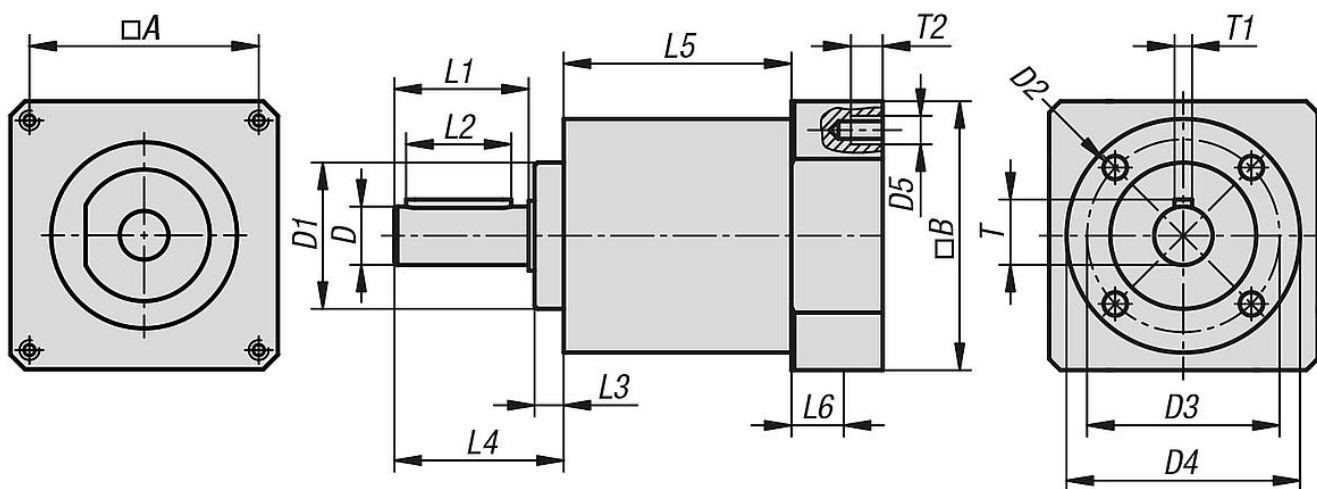
Service life: ~20000 h

Mounting position: arbitrary

Temperature range:

-25°C to +90°C (short-term up to +120°C)

Drawings



Overview of items

Order No.	Size	A	B	D	D1	D2	D3	D4	D5	L1	L2	L3	L4	L5	L6	T	T1	T2
22750-231004	NEMA 23	47,14	55	10	25	M04x8	33	40	M4	23	18	5	29	39	27	11,2	3	12
22750-341003	NEMA 34	69,6	85	14	40	M05x10	52	65	M5	30	25	8	39	64,5	31	16	5	12

Order No.	Transmission ratio	Max. output torque M Nm	Acceleration torque Nm	Torsional backlash arcmin	Torsional rigidity Nm/arcmin	Efficiency ratio by full load %	Max. permitted radial force N	Max. permitted axial force N
22750-231004	4:1	4	8	20	0,4	96	220	330
22750-341003	3:1	13	25	12	1,6	97	930	1080