

Item description/product images



**Description**

**Material:**  
Steel housing.  
Nitrile rubber seal.

**Version:**  
Ground edges.

**Technical data:**  
All bearings are supplied ready for mounting with lubricating grease type KE2P-35 acc. to DIN 51825.

Housing and shaft tolerances correspond to roundness tolerance class IT2 and perpendicularity tolerance class IT4.

**Application:**  
For thread drive bearing.

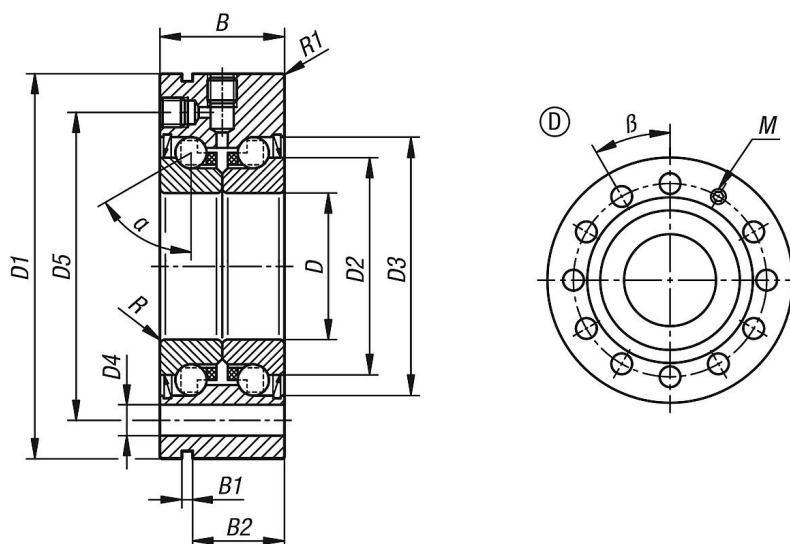
**Temperature range:**  
-30 °C to +120 °C.

**Assembly:**  
Precision slotted nuts must be used for mounting the threaded spindles.

To compensate for any material settling during assembly, tighten the slotted nuts using 2x tightening torque, loosen slightly and then tighten using the prescribed tightening torque.

Tighten fastening screws crosswise up to max. 70% of the yield point.

Drawings



Overview of items

Order No.	Abbreviation	Version 1	Form	B	B1	B2	D	D1	D2	D3	D4	D5	R	R1	$\alpha$	$\beta$	M	Tightening torque, precision locknut Nm	Speed limit rpm
23806-01-103008028	3080-2RS	double-row	D	28 -0,25	3	19	30-0,005	80-0,01	45,5	54	6,6	63	0,3	0,6	60°	30°	M6	32	2200

Overview of items

Order No.	Abbreviation	Static load rating N	Dynamic load rating N	Axial rigidity N/μm	Tilt rigidity Nm/mrad	Bearing friction torque Nm	Moment of inertia kg.cm <sup>2</sup>	Circular runout μm	Radial bearing clearance	Hole tolerance μm	OD tolerance μm	Width tolerance μm
23806-01-103008028	3080-2RS	64000	29000	850	300	0,50	0,730	2,5	pre-tensioned	0-5	0-10	0-250