

Item description/product images



Description

Material:

Stainless steel 1.4548.

Version:

Hardened to min. 40 HRC, bright.

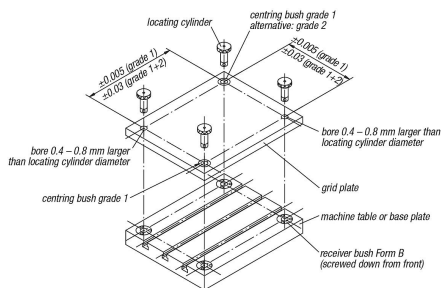
Note:

By a centre distance tolerance of ± 0.005 mm and two grade I centring bushes a repeat accuracy of ± 0.013 mm is possible.

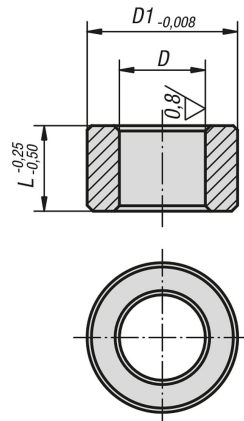
By a centre distance tolerance of ± 0.03 mm and one grade I and one grade II centring bush a repeat accuracy of 0.04 mm is possible.

The centring bushes are pressed into the receiver holes of the tooling plates using a light pressure.

For further details see "General information".



Drawings



Overview of items

Order No.	Version 1	T=tolerance	D	D1	L	Bore size for centring bush $\varnothing +0.01$
03154-02-113013	grade I	+0,005 - +0,018	13	19,04	13	19,016
03154-02-113020	grade I	+0,005 - +0,018	13	19,04	20	19,016
03154-02-116020	grade I	+0,005 - +0,018	16	25,042	20	25,016
03154-02-116025	grade I	+0,005 - +0,018	16	25,042	25	25,016
03154-02-120020	grade I	+0,005 - +0,018	20	35,042	20	35,018
03154-02-120025	grade I	+0,005 - +0,018	20	35,042	25	35,018
03154-02-125020	grade I	+0,005 - +0,018	25	35,042	20	35,018

Overview of items

Order No.	Version 1	T=tolerance	D	D1	L	Bore size for centring bush Ø +0.01
03154-02-125025	grade I	+0,005 - +0,018	25	35,042	25	35,018
03154-02-130020	grade I	+0,005 - +0,018	30	45,042	20	45,018
03154-02-130025	grade I	+0,005 - +0,018	30	45,042	25	45,018
03154-02-135020	grade I	+0,005 - +0,018	35	45,042	20	45,018
03154-02-135025	grade I	+0,005 - +0,018	35	45,042	25	45,018
03154-02-135040	grade I	+0,005 - +0,018	35	45,042	40	45,018
03154-02-135050	grade I	+0,005 - +0,018	35	45,042	50	45,018
03154-02-150020	grade I	+0,005 - +0,018	50	63,546	20	63,521
03154-02-150025	grade I	+0,005 - +0,018	50	63,546	25	63,521
03154-02-150040	grade I	+0,005 - +0,018	50	63,546	40	63,521
03154-02-150050	grade I	+0,005 - +0,018	50	63,546	50	63,521
03154-02-213013	grade II	+0,025 - +0,050	13	19,04	13	19,016
03154-02-213020	grade II	+0,025 - +0,050	13	19,04	20	19,016
03154-02-216020	grade II	+0,025 - +0,050	16	25,042	20	25,016
03154-02-216025	grade II	+0,025 - +0,050	16	25,042	25	25,016
03154-02-220020	grade II	+0,025 - +0,050	20	35,042	20	35,018
03154-02-220025	grade II	+0,025 - +0,050	20	35,042	25	35,018
03154-02-225020	grade II	+0,025 - +0,050	25	35,042	20	35,018
03154-02-225025	grade II	+0,025 - +0,050	25	35,042	25	35,018
03154-02-230020	grade II	+0,025 - +0,050	30	45,042	20	45,018
03154-02-230025	grade II	+0,025 - +0,050	30	45,042	25	45,018
03154-02-235020	grade II	+0,025 - +0,050	35	45,042	20	45,018
03154-02-235025	grade II	+0,025 - +0,050	35	45,042	25	45,018
03154-02-235040	grade II	+0,025 - +0,050	35	45,042	40	45,018
03154-02-235050	grade II	+0,025 - +0,050	35	45,042	50	45,018
03154-02-250020	grade II	+0,025 - +0,050	50	63,546	20	63,521
03154-02-250025	grade II	+0,025 - +0,050	50	63,546	25	63,521
03154-02-250040	grade II	+0,025 - +0,050	50	63,546	40	63,521
03154-02-250050	grade II	+0,025 - +0,050	50	63,546	50	63,521