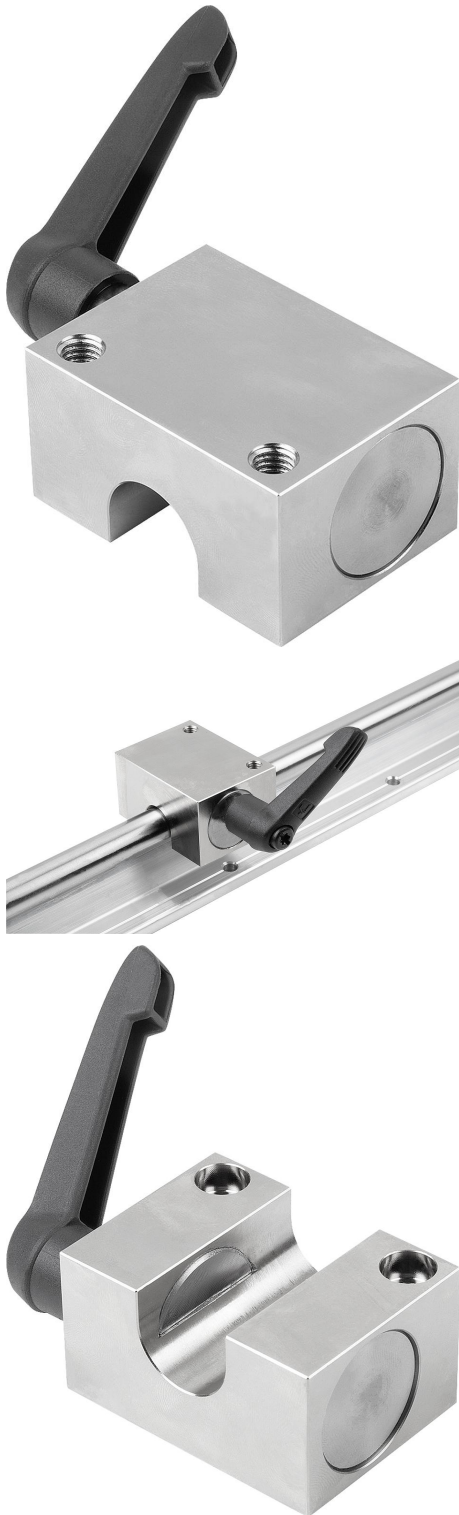


## Item description/product images

**Description****Material:**

Housing steel. From size 40 aluminium.

Clamping lever plastic, threaded spindle grade 12.9.

**Version:**

Housing nickel-plated. From size 40 anodised.

Clamping lever spindle black oxidised.

**Note:**

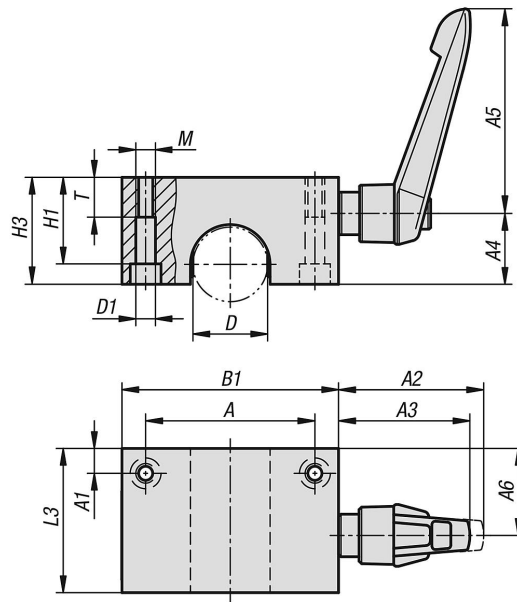
Manually operated clamping elements for static clamping tasks. Manual clamping process using the freely adjustable clamping lever. The floating jaws ensure symmetrical application of force onto the shaft. Up to 50,000 static clamping cycles (B10d value).

The shaft should have a tolerance of  $\pm 0.01$  mm and a minimum hardness of 54 HRC.

**Temperature range:**

-10°C to +70°C.

Drawings



Overview of items

Order No.	Size	A	A1	A2	A3	A4	A5	A6	B1	D	D1	H1	H3	L3	M	T	Retaining force F1 N	Retaining torque Nm	Tightening torque Nm
21596-12	12	32	4,5	33,5	30	16	40	18,5	43	12	4,2	18	24	32	M5	10	1200	7	5
21596-16	16	40	5,5	33,5	30	19	40	22	53	16	5	22	29	38	M6	12	1200	9,5	5
21596-20	20	45	6,5	41,5	45,5	21,5	65	26	60	20	6,8	25	32	44	M8	14	1200	12	7
21596-25	25	60	9	41,5	45,5	25	65	31	78	25	8,6	30	38	52	M10	16	1200	15	7
21596-30	30	68	10	58	53,5	28,5	80	35	87	30	8,6	35	43	58	M10	16	2000	30	12
21596-40	40	86	11	66	61	34,5	95	40,5	108	40	10,5	45	53	68	M12	20	2000	40	17
21596-50	50	108	12	77	72	39,5	110	46	132	50	14,5	50	58	76	M16	22	2000	50	17