

## Item description/product images



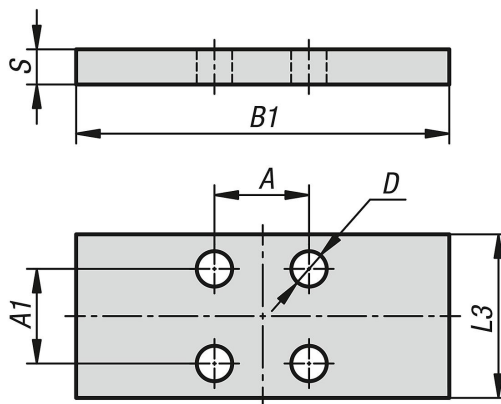
## Description

**Material:**  
Steel.

**Version:**  
nickel-plated.

**Note:**  
An adapter plate, dependent on the type of carriage used, is required for height adjustment.

## Drawings



## Overview of items

Order No.	Size	A	A1	B1	L3	D for screw	S
21427-915	15	17	17	47	24	M4	4
21427-920	20	15	15	60	24	M5	2
21427-925	25	20	20	70	30	M6	4
21427-930	30	22	22	90	39	M6	3
21427-935	35	24	24	100	39	M8	7
21427-945	45	26	26	120	44	M10	10
21427-955	55	30	30	140	49	M14	10