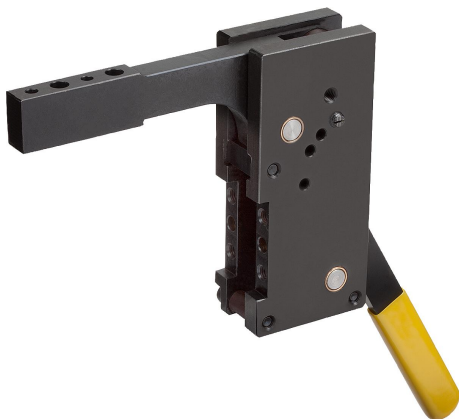


Item description/product images



Description

Material:

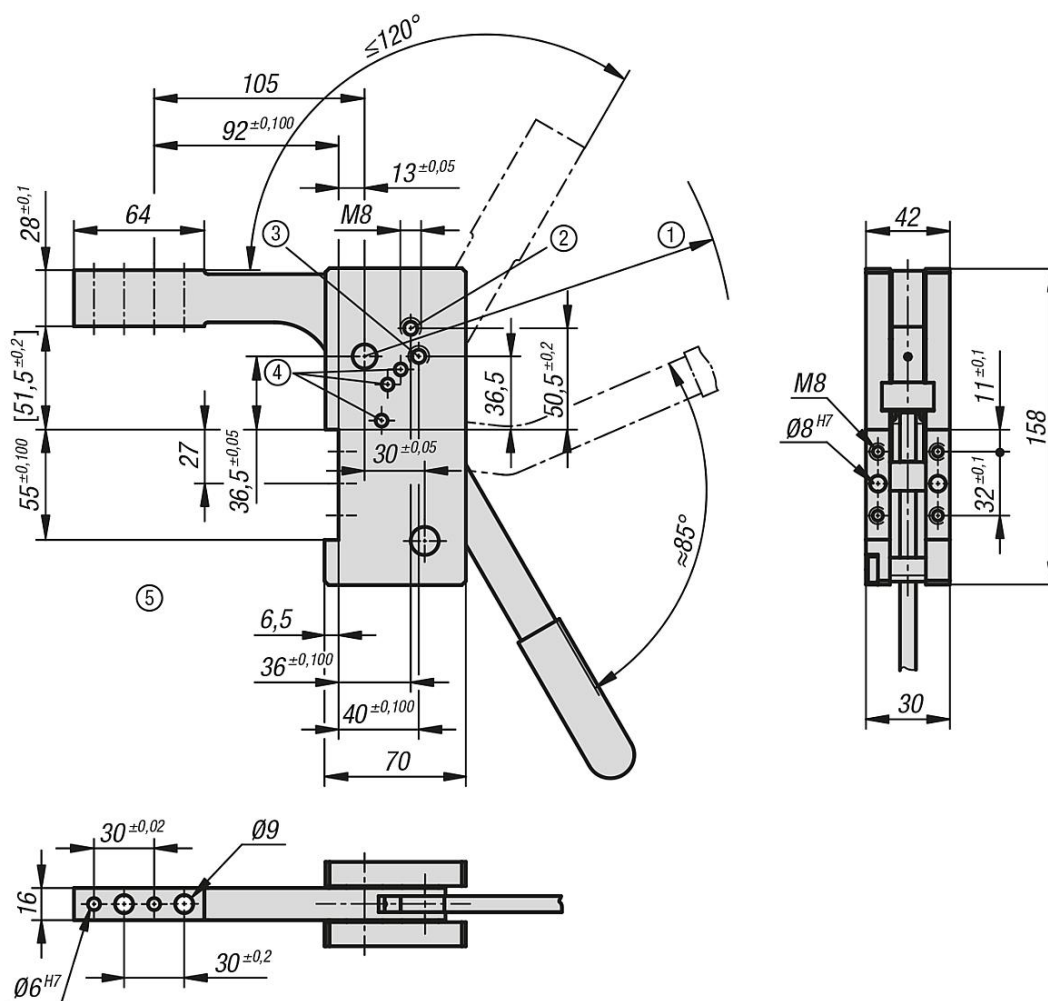
Housing and clamping arm steel.

Note:

Manual clamp with integrated toggle lever for over dead centre locking.
 The clamping arm has a fixed stop for reproducible end positions.
 The housing features a hole pattern at the front.
 All hinge pins for the mechanics are in bushes.
 The hand lever has an ergonomic grip.
 The clamping arm has a hole pattern for mounting thrust pads.

- 1) Cantilever: max. R 300 mm
- 2) Ratchet stops for opening angles 45°–65°
- 3) Ratchet stops for opening angles 90°–120°
- 4) End stop for opening angle
- 5) For values [...] tolerances spaced at 80 mm from the fulcrum apply

Drawings



Overview of items

Order No.	Clamping torque Mx Nm	Retaining torque Nm
05667-160	160	320