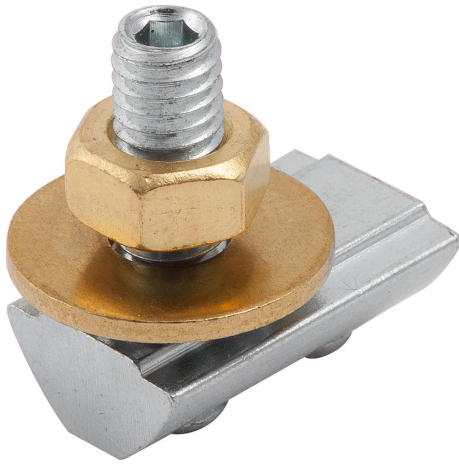


## Item description/product images



## Description

**Material:**

Slot key, grub screw and serrated washer, steel.

Nut and washer, brass.

**Version:**

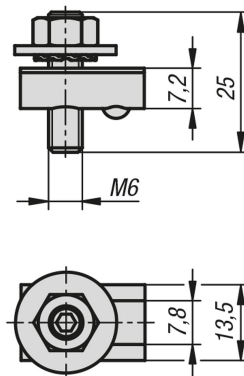
Slot key, grub screw and serrated washer, electro zinc-plated.

**Note:**

For protecting installations and persons. Connectors for earthing aluminium profile structures and interconnecting the aluminium profiles by integrating them into the protective earth (PE) system. Conductive contact is established through defined destruction of the oxide layer in the slot base and on the slot flanks.

The cable lug must be positioned between the serrated washer and the washer during assembly.

## Drawings



## Overview of items

Order No.	Version 2	Slot width
10470-0806	type I	8