

Item description/product images

**Description****Material:**

Stainless steel 1.4542.

Version:

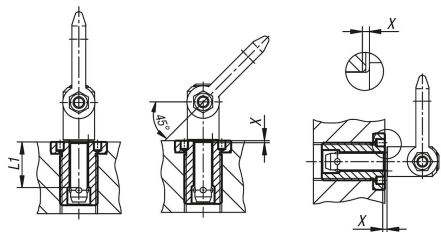
Hardened.

Note:

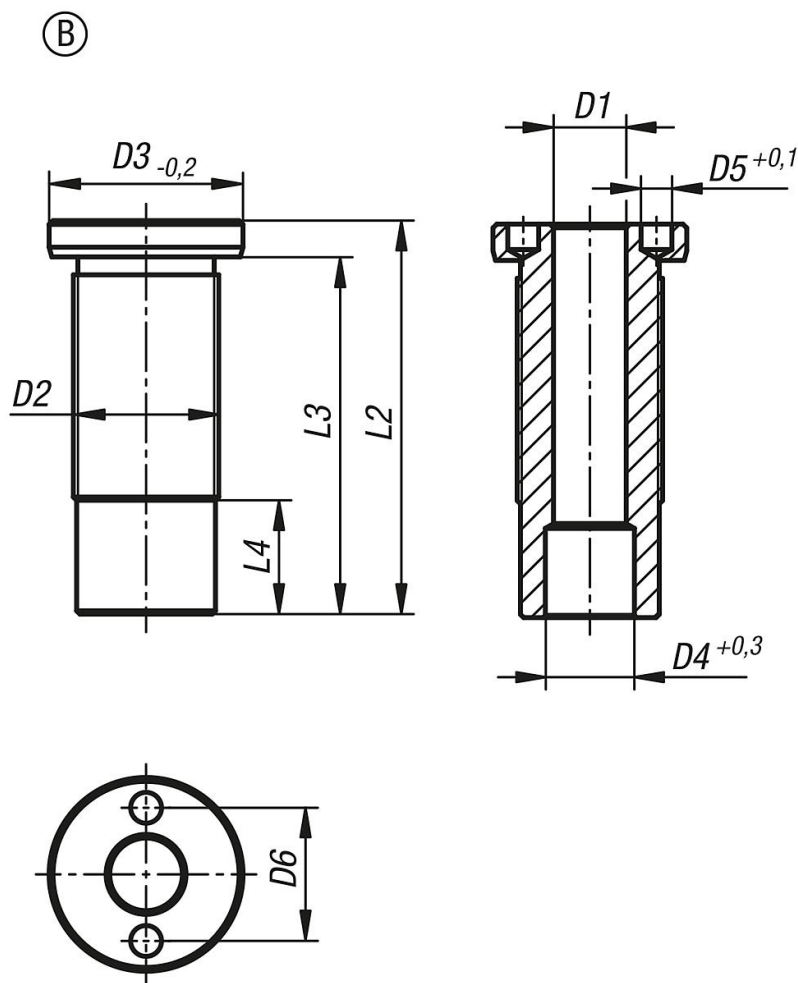
The locating bushes offer a safe and quick option for holding the ball lifting pins. They ensure that installation in a range of supporting materials can be carried out easily and reliably. Can also be used with thin-walled parts and blind holes. This version is suitable for applications which require a flat surface after having been screwed in. They are corrosion-resistant and do not wear easily.

Accessory:

Adjustable face pin spanner 96651.



Drawings



Overview of items

Order No.	Form	D1	D2	D3	D4	D5	D6	L1	L2	L3	L4	X	Tightening torque Nm
07781-11235	B	12	M24	32	14,7	5,1	22	35	50	44	3,8	1,5	150
07781-11250	B	12	M24	32	14,7	5,1	22	50	65	59	18,8	1,5	150
07781-11650	B	16	M30	39	19,2	5,1	30	50	65	59	6	1,5	200
07781-11675	B	16	M30	39	19,2	5,1	30	75	90	84	31	1,5	200
07781-12050	B	20	M36x2	43	26	5,1	30	50	70	63	3,5	1,5	200
07781-12075	B	20	M36x2	43	26	5,1	30	75	95	88	28,5	1,5	200