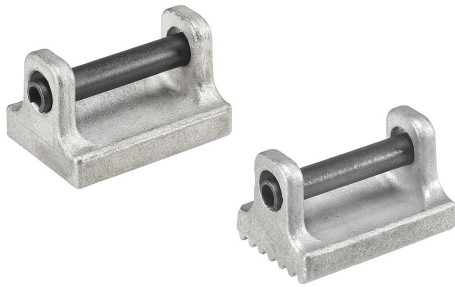


Item description/product images



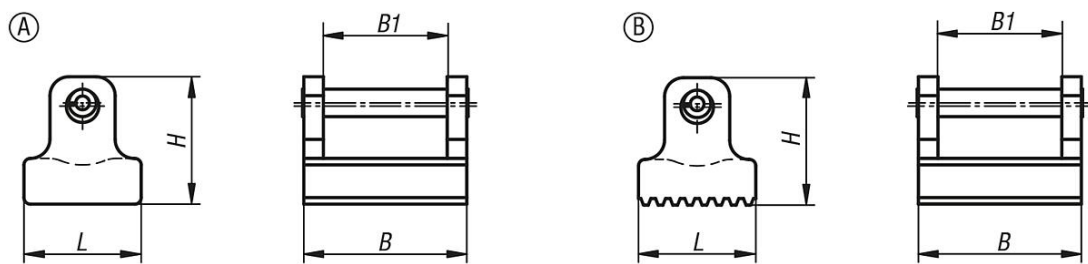
Description

Material:
Stainless steel

Note:
Power clamps can be fitted with serrated or smooth thrust pads.

Accessory:
Power clamp 04629
3-stage power clamp 04629-10

Drawings



Overview of items

Order No.	Form	Form definition	B	B1	H	L
04631-019	A	smooth	19	13	14	12
04631-025	A	smooth	25	19	19,5	18
04631-030	A	smooth	30	21	24	20
04631-036	A	smooth	36	26	28	25
04631-119	B	serrated	19	13	14	12
04631-125	B	serrated	25	19	19,5	18
04631-130	B	serrated	30	21	24	20
04631-136	B	serrated	36	26	28	25