

Item description/product images



Description

Material:

Housing steel plate.
Wheels with thermoplastic rubber tread.
Wheel body polypropylene.

Version:

Housing press formed.
Wheels with plain bearings.

Note:

Wheel axle threaded. Fixed castors with bolt hole. Electrically conductive wheels, non-marking grey. The ohmic resistance of the wheel $\leq 10^4 \Omega$.

Application:

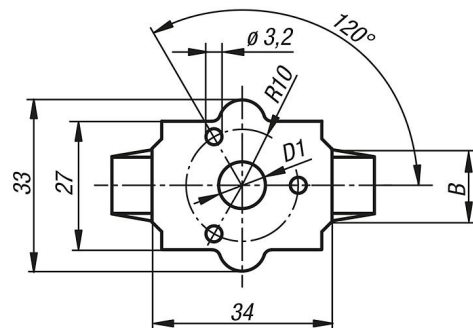
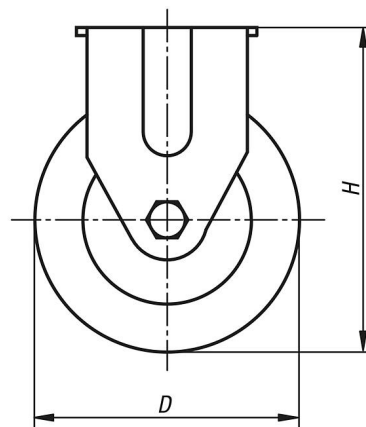
Electrically conductive wheels on swivel and fixed castors are used to protect against electrostatic discharge generated by transport equipment or the transported goods. Damage to sensitive goods and painful electrostatic shocks to the personal is so prevented.

Temperature range:

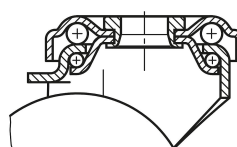
-20 °C to +60 °C.

Drawings

fixed castor



swivel head bearing



Overview of items

Order No.	Item	Version 1	Wheel bearing	B	D	D1	H	Permissible load kg
95010-11050191	Fixed castor	without locking system	plain bearing	19	50	11	69	30
95010-11075251	Fixed castor	without locking system	plain bearing	25	75	11	98	50