

Item description/product images



Description

Material:

The tube clamps with diameters 30 and 40 mm have a silicone sleeve that protects the thread of the hex head screw from contamination and damage.

Version:

Clamping levers for tightening.

Note:

Electropolished.

On request:

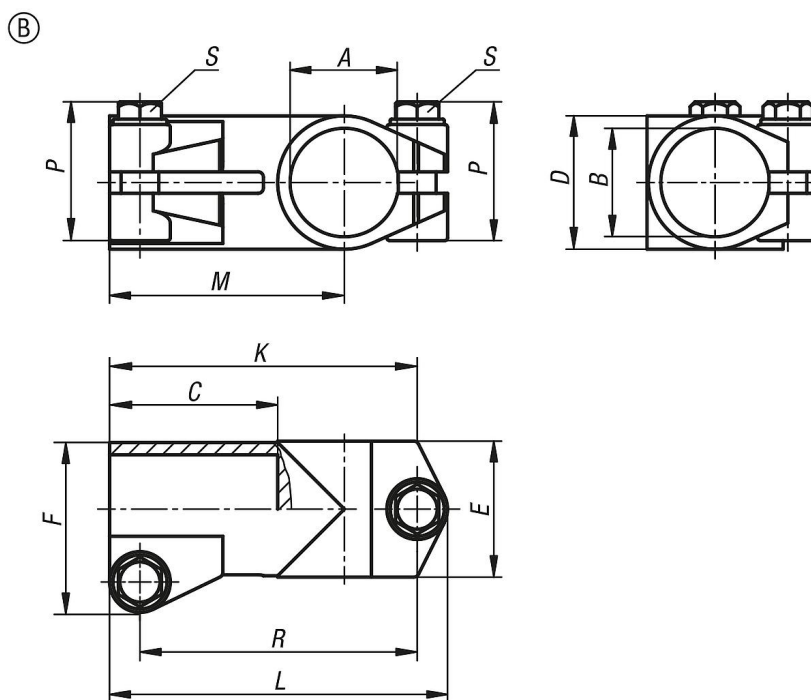
- Round and square tubes 29050

Accessory:

Stainless steel investment cast 1.4308.

ISO 4017 hex head screw and ISO 4032 nut, stainless steel.

Drawings



Overview of items

Order No.	Form	A	B	C	D	E	F	K	L	M	P	R	S
29006-13030	B	30,1	30,1	40	38,4	38	48	78	87	58	45.5	69	M8x30
29006-14040	B	40,17	40,17	60	50,4	50	63	112	124,9	87	52	102,5	M10x35

Overview of items
