

Item description/product images

**Description****Material:**

Polyamide fibreglass reinforced.

Version:

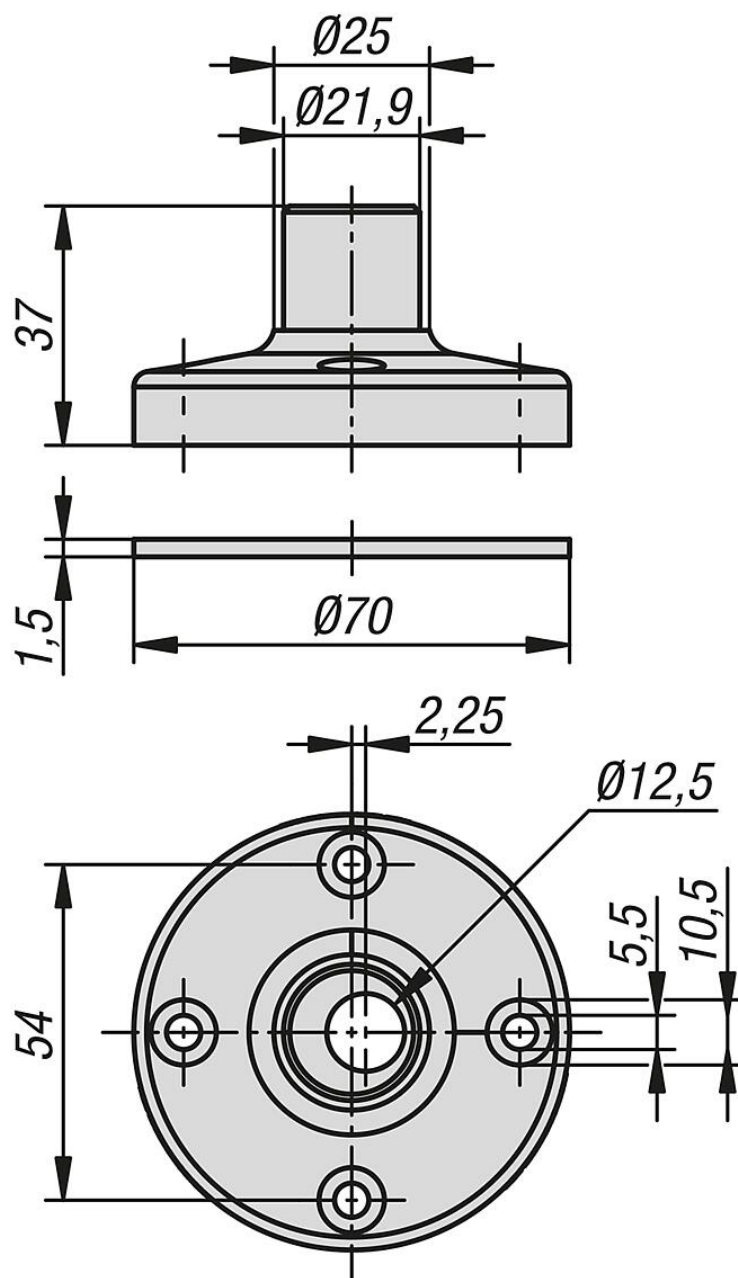
black.

Note:

Base for Ø25 mm tube. Enables elevated installation of signaling units.

A 25mm O.D. tube can be fitted onto this mounting base. The connecting element for tube mounting (Form B) or the connecting element with M12 plug (Form C) can be mounted on the tube.

Drawings



Overview of items

Order No.

81400-35-170037