

Item description/product images



Description

Material:

Steel.

Version:

Body tempered and black oxidised.

Square washer case hardened and brass-plated.

Note:

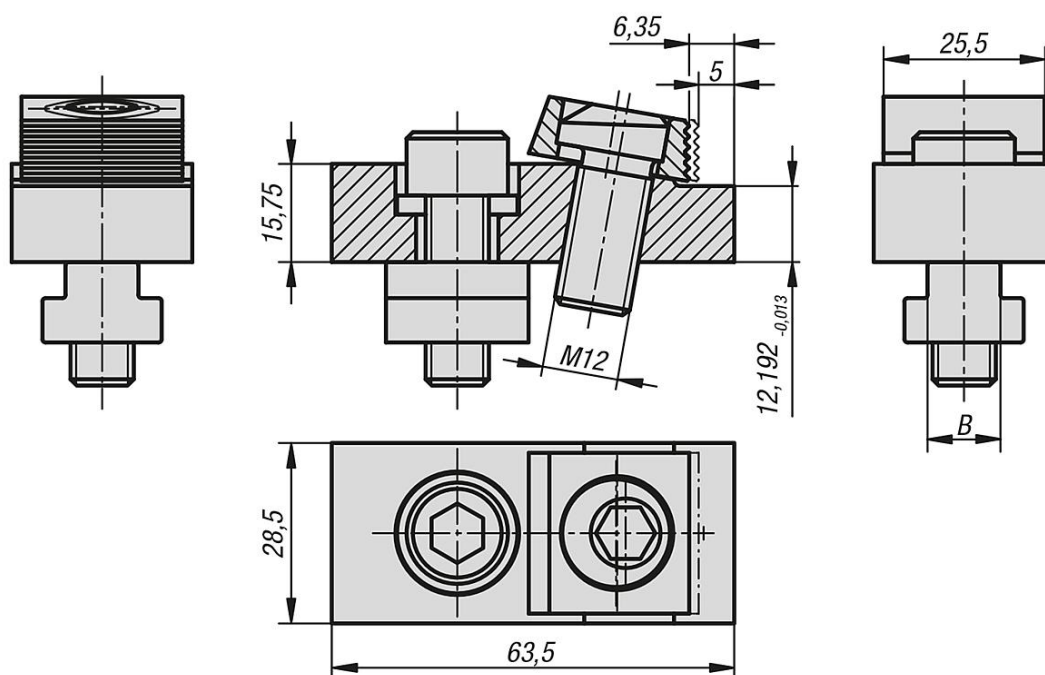
Also called riser clamps.

These cam clamps with riser can be used directly on machine tables. A positive down force is exerted during clamping.

On request:

Replacement cam screws.

Drawings



Overview of items

| Order No. | B Slot width | Clamping force kN | Accessories NLM |
|-----------|-----------------|-------------------------|-----------------|
| 04437-12 | 12 | 12 | - |
| 04437-14 | 14 | 12 | 04521-10-1216 |
| 04437-16 | 16 | 12 | 04521-10-1216 |
| 04437-18 | 18 | 12 | 04521-10-1216 |

