

## Item description/product images



## Description

**Material:**

Tool steel.

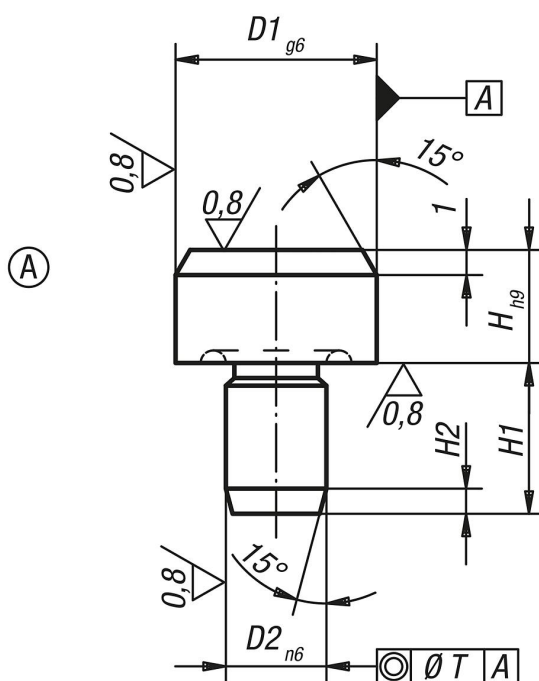
**Version:**

Hardened and ground.

**Note:**

Thrust pads, Form A, serve as supports for workpieces and fixtures. Thrust pads, Form A, can also be used as hardened stops and as fixture feet. For similar pads, see 03120, 03130, 03140 and 03150.

## Drawings



## Overview of items

Order No.	Form	Version 1	D1	D2	H	H1	H2	T
02020-106	A	without centre bore	6	4	5	6	1,2	0,02
02020-110	A	without centre bore	10	6	6	9	1,6	0,02
02020-116	A	without centre bore	16	8	8	12	2	0,04
02020-125	A	without centre bore	25	12	10	18	2,5	0,04

Overview of items

---