

## Item description/product images



## Description

**Material:**

Steel or stainless steel 1.4301.

**Version:**

Electro zinc-plated, thick-film passivated and top coat sealed.

Stainless steel, bright.

**Note:**

Latches with draw bail for securing and locking hatches, container lids, machine cladding etc. By exceeding the dead centre they resist vibration.

The locking force is applied by drawing on the bail.

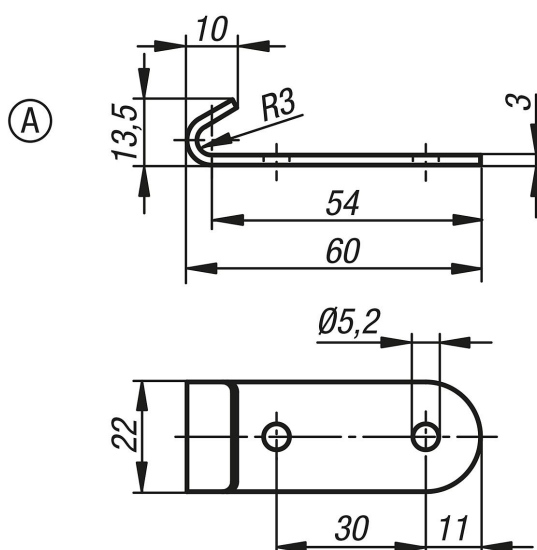
The latches can be screwed down or riveted. We recommend using countersunk screws for fastening the components.

Order catch plates separately.

**On request:**

Lockable version with padlock bracket.

## Drawings



## Overview of items

Order No.	Main material	Form
05536-91520601	steel	A
05536-91520602	stainless steel	A

