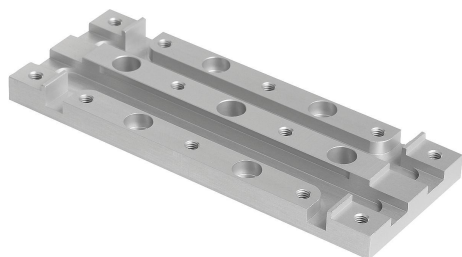


Item description/product images



Description

Material:

Aluminium alloy.

Version:

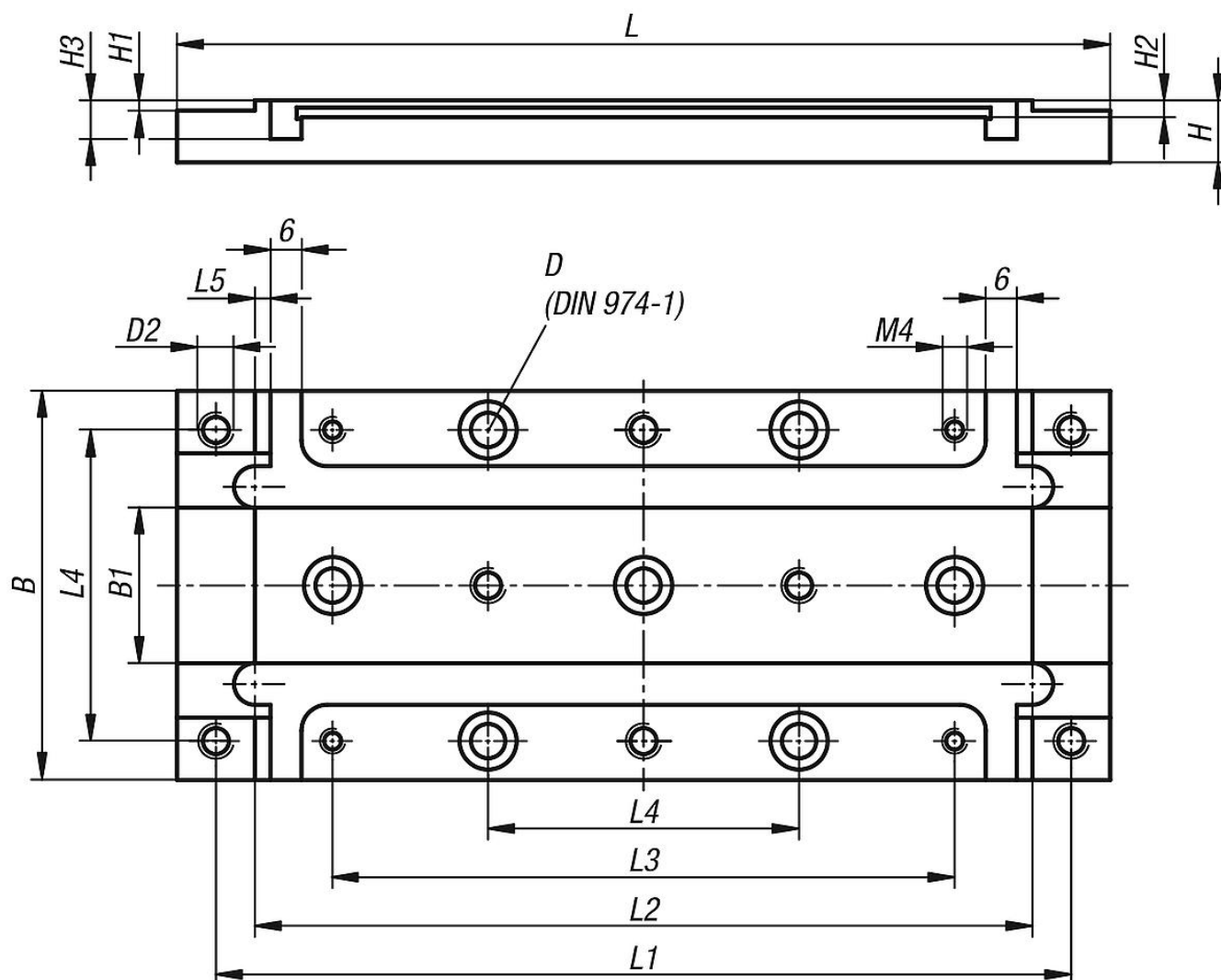
anodised.

Note:

The mounting plate is used for the horizontal mounting of the short or long positioning stages with electric drive. With slots for direct support of inductive proximity switch (20905-005). The proximity switch can be adjusted when the positioning unit is mounted. The threaded holes M4 are used to fasten the sensor holder 21093.

Can be combined with all other parts of the same size.

Drawings



Overview of items

Order No.	Size	Version	B	B1	D	H	H1	H2	H3	L	L1	L2	L3	L4
21090-082	8	long	46	10	4	10	2	2,3	6,5	120	108	96	72	36
21090-122	12	long	75	30	6	12	2	3,3	7,5	180	165	150	120	60