

Item description/product images

**Description****Material:**

Housing steel plate.
Wheel treads solid rubber.
Wheel rims polyamide.

Version:

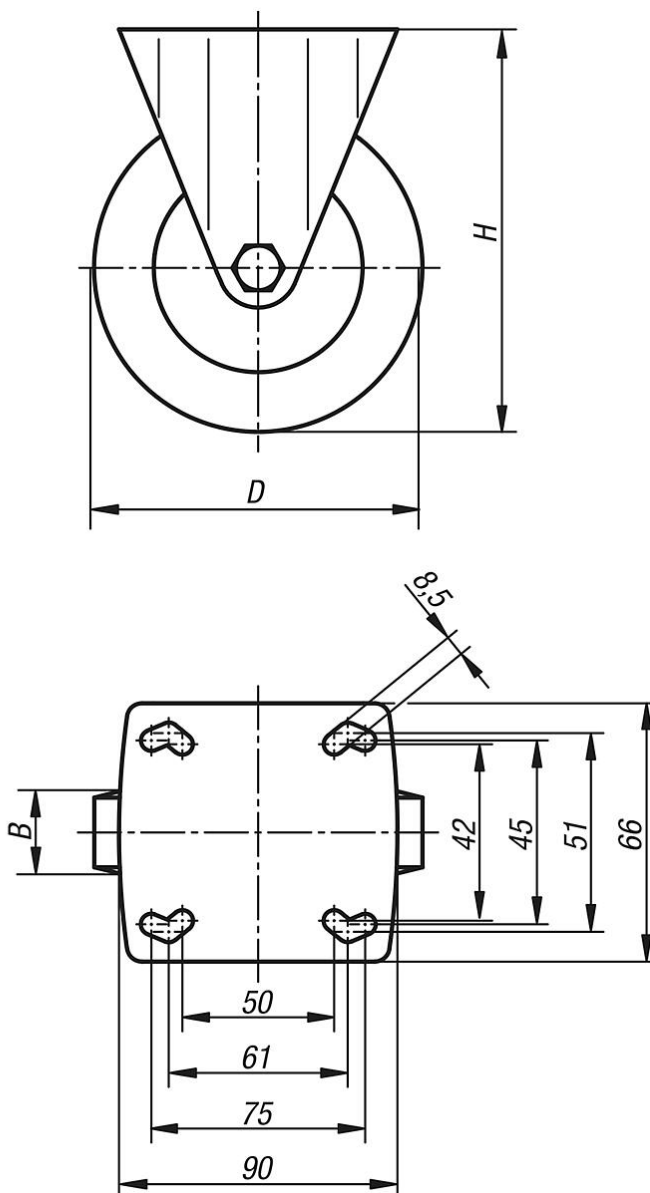
Pressed housing; wheels with slide bearing

Note:

Wheel axle bolted.
Solid rubber tyres are shock and impact proof and non-corroding.

Drawings

fixed castor



Overview of items

Order No.	Item	Version 1	Wheel bearing	B	D	H	Permissible load kg
95012-080251	Fixed castor	without locking system	plain bearing	25	80	111	60
95012-100321	Fixed castor	without locking system	plain bearing	32	100	136	90
95012-125251	Fixed castor	without locking system	plain bearing	25	125	161	80
95012-125321	Fixed castor	without locking system	plain bearing	32	125	161	100