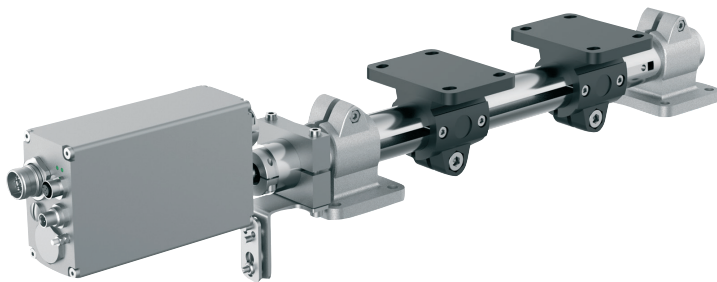


# Mounting instructions - Mounting set 85000-51

## Application

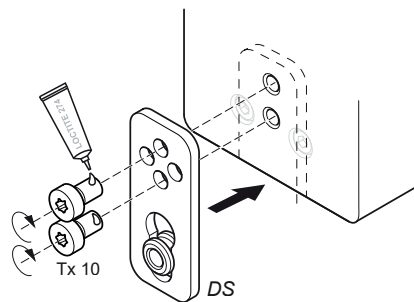


Type	Accessory set
E30	85000-51-030
E40	85000-51-040
E50	85000-51-050

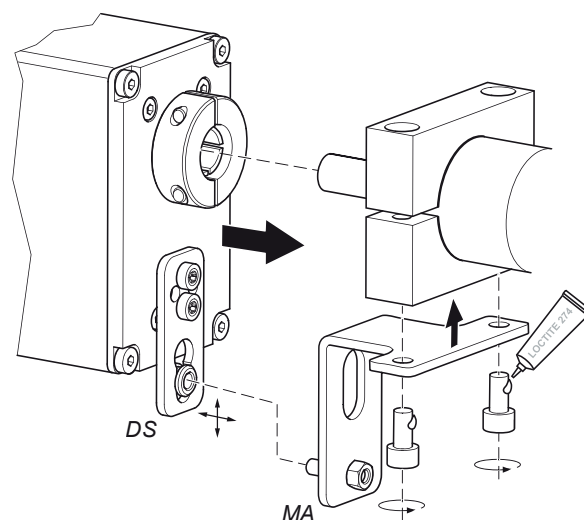
## Assembly

The actuator 85000-50 may only be operated in an upright position.

- Apply medium-strength threadlocker (e.g. Loctite 274) to the threads of the two M5x8 fastening screws for the torque support (DS).
- Attach the torque arm to the actuator; tightening torque for the screws: 5 Nm.

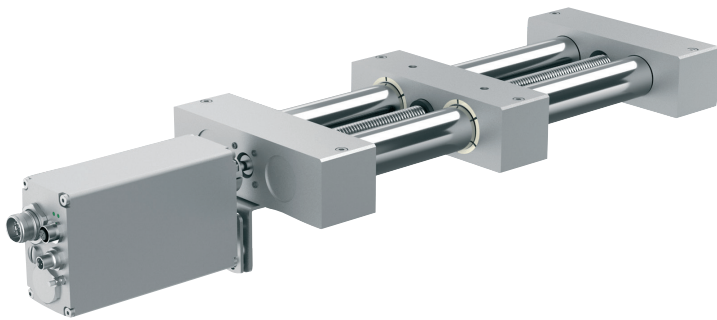


- Apply medium-strength threadlocker to the threads of the two fastening screws for the respective mounting adapter (MA).
- Attach the mounting adapter to the linear actuator.
- Rotate the shaft of the linear actuator or the actuator so that the parallel key and the corresponding keyway in the hollow shaft match.
- Slide the actuator onto the machine axis until there is a gap of ca. 1 mm between the bearing bush in the torque arm and the mounting adapter and secure it there (clamping ring).



# Mounting instructions - Mounting set 85000-51

## Application

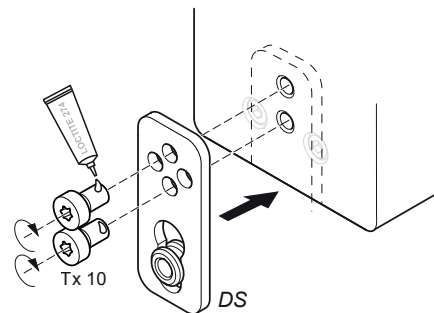


Type	Accessory set
E30	85000-51-130
E40	85000-51-140

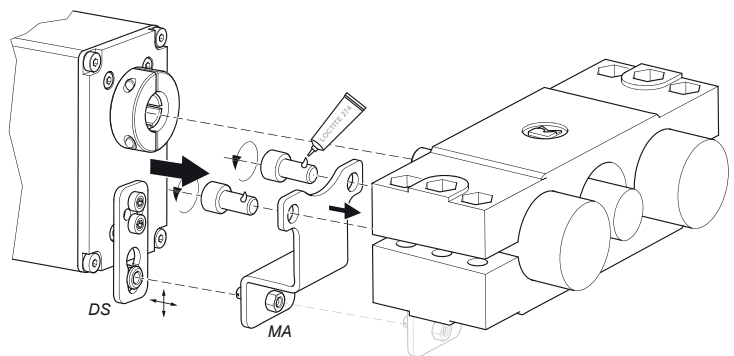
## Assembly

The actuator 85000-50 may only be operated in an upright position.

- Apply medium-strength threadlocker (e.g. Loctite 274) to the threads of the two M5x8 fastening screws for the torque support (DS).
- Attach the torque arm to the actuator; tightening torque for the screws: 5 Nm.

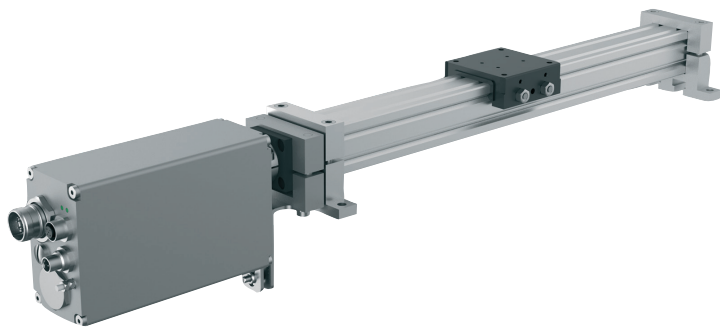


- Apply medium-strength threadlocker to the threads of the two fastening screws for the respective mounting adapter (MA).
- Attach the mounting adapter to the linear actuator.
- Rotate the shaft of the linear actuator or the actuator so that the parallel key and the corresponding keyway in the hollow shaft match.
- Slide the actuator onto the machine axis until there is a gap of ca. 1 mm between the bearing bush in the torque arm and the mounting adapter and secure it there (clamping ring).



# Mounting instructions - Mounting set 85000-51

## Application

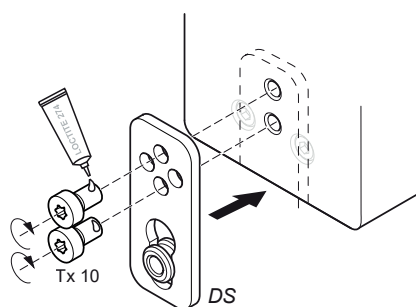


Type	Accessory set
E30	85000-51-230
E40	85000-51-240
E50	85000-51-250

## Assembly

The actuator 85000-50 may only be operated in an upright position.

- Apply medium-strength threadlocker (e.g. Loctite 274) to the threads of the two M5x8 fastening screws for the torque support (DS).
- Attach the torque arm to the actuator; tightening torque for the screws: 5 Nm.



- Apply medium-strength threadlocker to the threads of the two fastening screws for the respective mounting adapter (MA).
- Attach the mounting adapter to the linear actuator.
- Rotate the shaft of the linear actuator or the actuator so that the parallel key and the corresponding keyway in the hollow shaft match.
- Slide the actuator onto the machine axis until there is a gap of ca. 1 mm between the bearing bush in the torque arm and the mounting adapter and secure it there (clamping ring).

