

Item description/product images



Description

Material:

Bushes zinc.

Note:

The bushes for tongues are used to connect swivel grips to tongues. With the aid of the bushes and in combination with the adapter for quarter-turn lock tongues 05601-10, the adapter for round rods 05601-05 or the bar lock for flat rods, a 1 or 3 point locking system can be created to secure e.g. switch cabinets.

Accessory:

05569 Steel tongue for quarter-turn locks.

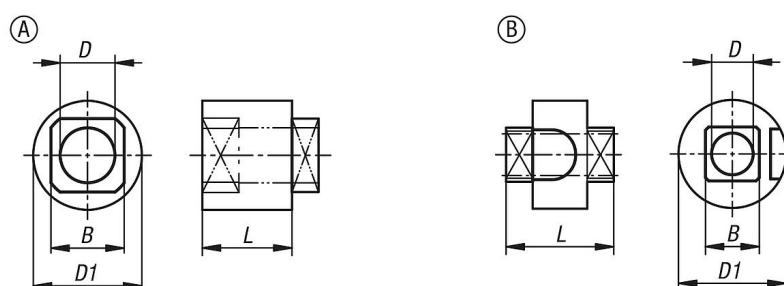
05570 Steel tongue for quarter-turn locks.

05601-10 Plastic or zinc adapter for tongues.

05601-22 Plastic or zinc bar lock for flat bars.

05601-05 Steel, stainless steel or zinc adapter for rods

Drawings



Overview of items

| Order No. | Form | B | D | D1 | L |
|---------------|------|-----|-----|------|------|
| 05601-11-0612 | A | 8 | 6 | 11,8 | 11 |
| 05601-11-0611 | A | 8 | 6 | 11,8 | 12,6 |
| 05601-11-0615 | B | 7,9 | 6,1 | 16 | 15 |