

Item description/product images



Description

Material:

Housing plastic
Raceways ball bearing steel.
Balls steel.

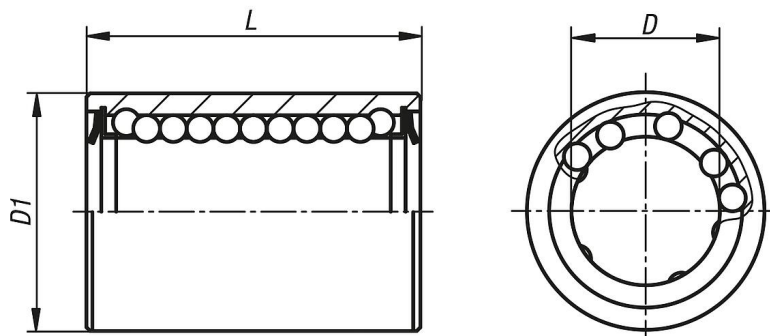
Note:

Self-aligning and sealed both ends. These bearings comprise a highly precise die-cast plastic carrier in which the bearing steel, clipped-on raceways are mounted. The plastic carrier also acts as a return and seal retainer. The seal is made from a special polyamide material with a low coefficient of friction. The linear ball bearing is secured using DIN 471/472 circlips.

Application:

Suitable for applications where installation space is limited.

Drawings



Overview of items

Order No.	D	D1	L	Dynamic load rating N	Static load rating N
21511-01-0802	8	15	24	490	355
21511-01-1202	12	19	28	695	510
21511-01-1602	16	24	30	930	630
21511-01-2002	20	28	30	1160	800
21511-01-2502	25	35	40	2120	1560
21511-01-3002	30	40	50	3150	2700
21511-01-4002	40	52	60	5500	4500
21511-01-5002	50	62	70	6950	6300