

Item description/product images



Description

Material:

Die-cast zinc.

Version:

Black powder-coated, high-gloss chromed or matt chromed.

Note:

Latches for the easy and secure locking of doors and hatches. The toggle system makes them vibration proof.

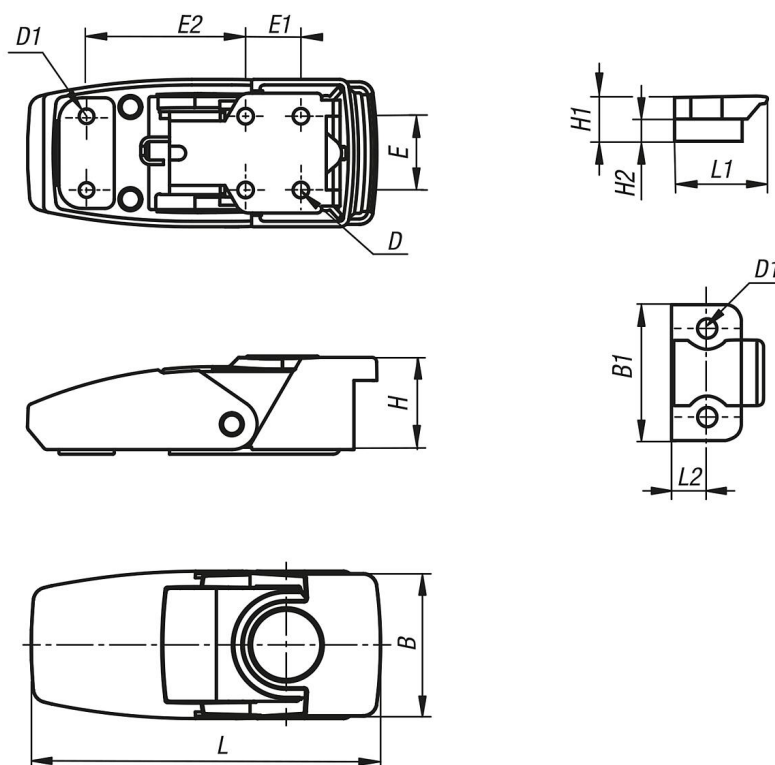
The latches can be screwed on or riveted. We recommend using M3 countersunk screws to fasten the components.

The die-cast housing conceals all functional parts and so secures against dismantling when closed.

Max. load capacity is 1,200 N.

Supplied with catch plate.

Drawings



Overview of items

| Order No. | Version 1 | Main colour | Surface finish body | L | B | H | B1 | D | D1 | E | E1 | E2 | H1 | H2 | L1 | L2 |
|----------------|--------------|-------------|---------------------|------|------|----|------|-----|-----|----|----|------|-----|-----|------|----|
| 05547-10-10064 | not lockable | black | powder-coated | 64,8 | 26,5 | 18 | 19,7 | 3,2 | 3,2 | 12 | 12 | 30 | 6,5 | 3,5 | 15,5 | 6 |
| 05547-10-20064 | not lockable | - | high-gloss chromed | 64,8 | 26,5 | 18 | 19,7 | 3,2 | 3,2 | 12 | 12 | 30 | 6,5 | 3,5 | 15,5 | 6 |
| 05547-10-30064 | not lockable | - | matt chromed | 64,8 | 26,5 | 18 | 19,7 | 3,2 | 3,2 | 12 | 12 | 30 | 6,5 | 3,5 | 15,5 | 6 |
| 05547-10-10076 | not lockable | black | powder-coated | 76 | 32 | 21 | 24 | 3,2 | 3,2 | 16 | 12 | 34,5 | 8 | 4 | 16 | 6 |

Overview of items

| Order No. | Version 1 | Main colour | Surface finish body | L | B | H | B1 | D | D1 | E | E1 | E2 | H1 | H2 | L1 | L2 |
|----------------|--------------|-------------|---------------------|----|----|----|----|-----|-----|----|----|------|----|----|----|----|
| 05547-10-20076 | not lockable | - | high-gloss chromed | 76 | 32 | 21 | 24 | 3,2 | 3,2 | 16 | 12 | 34,7 | 8 | 4 | 16 | 6 |
| 05547-10-30076 | not lockable | - | matt chromed | 76 | 32 | 21 | 24 | 3,2 | 3,2 | 16 | 12 | 34,9 | 8 | 4 | 16 | 6 |