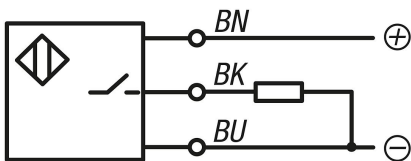
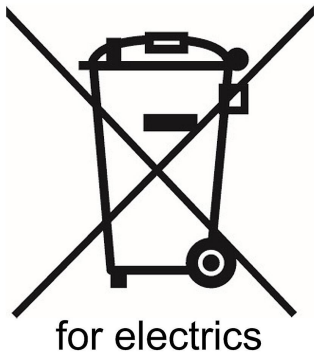
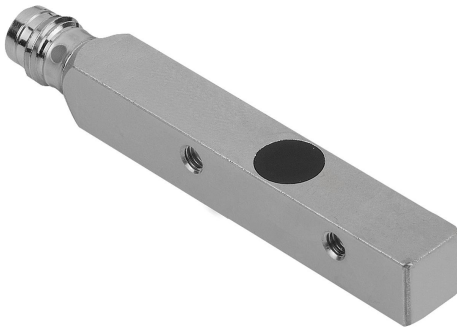


Item description/product images



Description

Material:

Housing die-cast zinc alloy.
Active surface POM.

Version:

Voltage: $U = 10 - 30 \text{ V DC}$
Function: Normally open
Switch type: PNP
Mounting type: flush
Security type: IP 67

Note:

Non-contact, wear-free operation. High switching frequency and switch accuracy.
Non-sensitive to vibration, dust and moisture. Inductive sensors register all metals without contact.

Short-circuit and reverse-polarity proof.

Temperature range:

$-25 \text{ }^{\circ}\text{C}$ to $+70 \text{ }^{\circ}\text{C}$

Safety:

This product is not suited as a sensor for the personal protection.

Drawing reference:

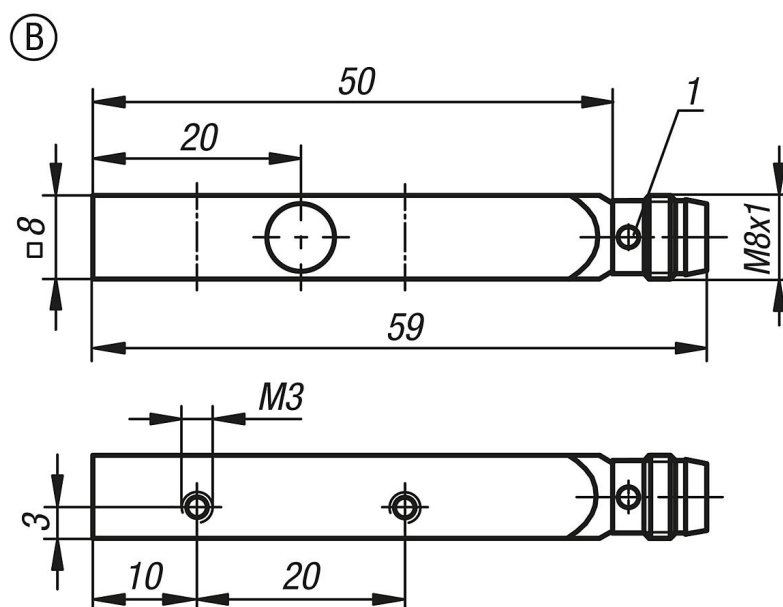
1) LED-indicator

BN = brown

BK = black

BU = blue

Drawings



Overview of items

Order No.	Form	Switching distance S _n (mm)	Current I max. (mA)	Switching frequency f (Hz)	Connection type	No. of conductors x conductor cross-section
83000-05-010	B	1,5	200	5000	connector 3-pin	-