

Item description/product images

**Description****Material:**

Housing stainless steel 1.4301.

Wheel rim, high-quality thermoplastic polyurethane.

Wheel tread, high-quality polyamide.

Version:

Housing press formed.

Double ball bearing in the castor head.

Plain bearing in wheels.

Note:

Wheel axle bolted.

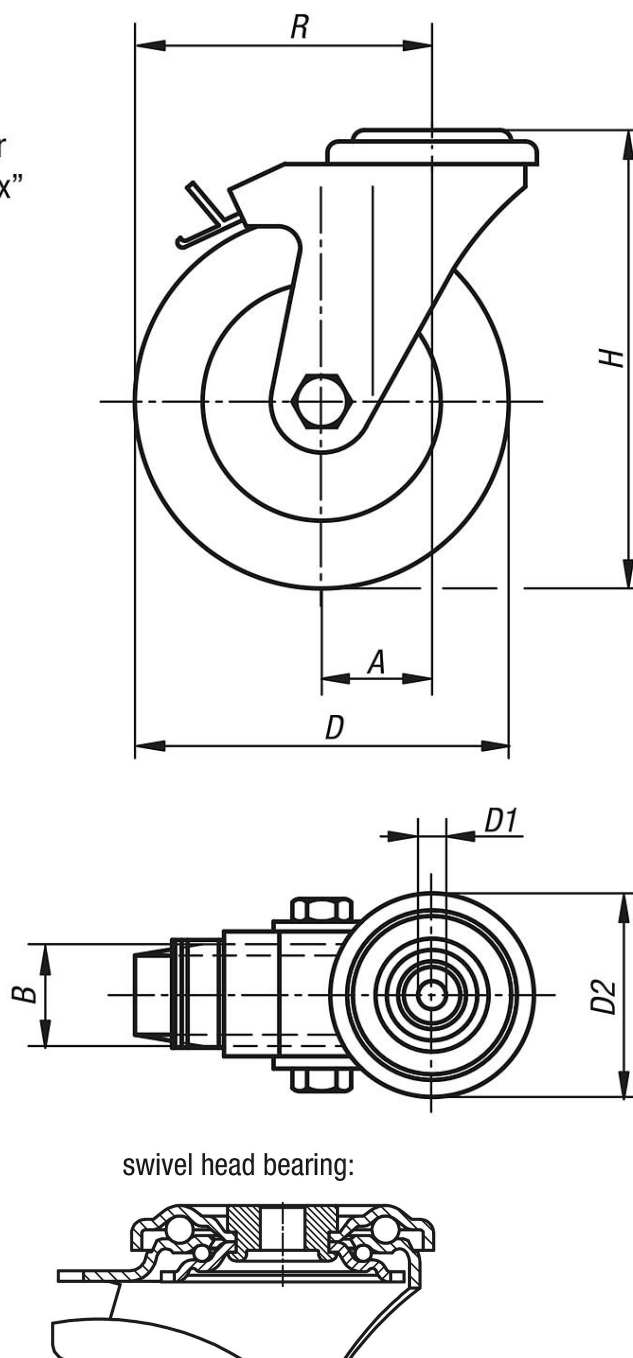
Application:

Loads can be transported with low noise and maximum ease in area's with high hygiene requirements.

Temperature range:

-20 °C - +70 °C.

Drawings

swivel castor
with "stop-fix"

Overview of items

Order No.	Item	Wheel bearing	A	B	D	D1	D2	H	R	Permissible load kg
95046-02-211000352	Swivel castor	plain bearing	36	35	100	13	70	125	86	150
95046-02-211250402	Swivel castor	plain bearing	40	40	125	13	70	150	102,5	150
95046-02-211600452	Swivel castor	plain bearing	54	45	160	13	88	195	134	300
95046-02-212000502	Swivel castor	plain bearing	54	50	200	13	88	235	154	300

Overview of items
