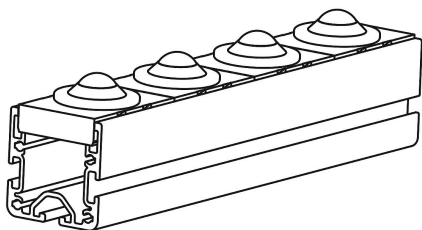
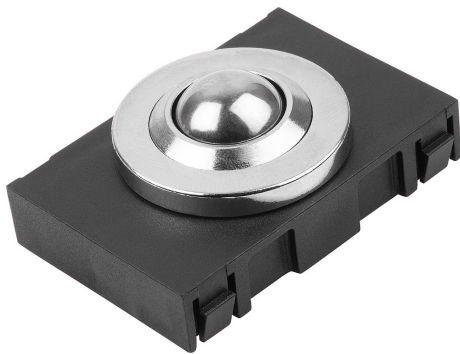


Item description/product images



Description

Material:

Ball stainless steel.

Housing steel.

Cage polyamide, carbon-fibre reinforced.

Version:

Cage black.

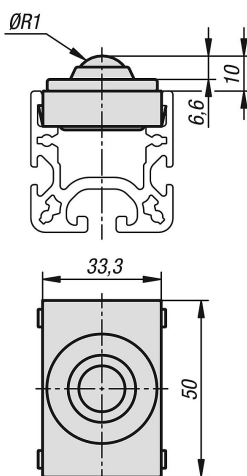
Note:

These ball transfer units are matched to the aluminium profiles for roller rails and can be mounted on them quickly and easily.

For flexible movements in two dimensions. With a low-wear and low-friction ball rollers.

No tools required. Suitable for aluminium profiles Type B and I.

Drawings



Overview of items

Order No.	R1	Load capacity N
10448-03-16	16	100

